

We support PV systems
Formerly Everest Solar Systems 



Easy to use
digital
product
catalog

Product Catalog 2021

Valid from April 2021

Table of Contents

Company	3
Base and Base Camp	4 - 5
Systems Overview	6
CrossRail System	7 - 12
CrossRail Shared Rail System	13 - 18
CrossRail Tilt Up System	19 - 24
MiniRail XPress System	25 - 28
D-Dome Railless ² System	29 - 33
CrossRail Ground Mount System	34 - 38
Roof Attachments	39
Composition Shingle Roof Attachments	40
Tile Roof Attachments	41-42
Metal Roof Attachments	43
Flat Roof Attachments	43
Accessories	44
Clamps	45
Rail Connectors	46
Grounding Lugs	46
Wire Management	47
Microinverter & Optimizer Mounting Kits	48
Aesthetics	48
Nuts & Bolts	49
Shared Rail Accessories	49
Tilt Up Accessories	50
D-Dome Railless ² Accessories	50
Terms and Conditions	51
Contact	52

About Us

With sophisticated product innovations and a deep customer focus, K2 Systems is the engineering leader for all your mounting system needs. We are a market leader with more than 16 GW installed worldwide. We offer proven product solutions and innovative designs. Our designs result in cost competitive racking systems with dedicated support that will help you win more projects. We partner with our customers and suppliers for the long-term.

K2 Systems U.S. is headquartered in Vista, California. We work closely with our Guadalajara, Mexico office to service both North and South America with ease. We design the systems in our own development department in close collaboration with sales, and adapt and optimize them to the ever changing market. The heart of the company is the development of installation-friendly mounting systems that are tailored to the needs of our customers, though the soul is the common spirit of all employees. Together we define technical innovation and set new service standards for a sustainable future.

Our Products

Our products are very important to us. We take them from the initial concept, through the production right up to the final manufacturing. We pride ourselves on having an excellent range of products to best serve the global market. The five product groups are: mounting rails, roof attachments, module clamps, screws & nuts, system components and accessories.

Each of the systems can be combined and used in all locations and conditions of the respective snow and wind load zones. We use aluminium and stainless steel for most of our components. This guarantees high resistance to corrosion, durability and provides customer satisfaction.



Product Catalog 04/2021

SYSTEM

PITCHED ROOF

CrossRail

Shared Rail

Tilt Up

MiniRail

FLAT ROOF

D-Dome R²

Tilt Up

GROUND MOUNTED

Ground Mount

ROOF ATTACHMENTS

ACCESSORIES

TERMS AND CONDITIONS

CONTACT

Base Camp

Your PV education center

Base

Future-oriented PV planning
www.base.k2-systems.com



Welcome to K2 Base Camp - your hub for K2 training content!

Keep up to date with webinars and watch installation videos to see helpful tips'n'tricks about our mounting systems!

You can find more information on the following by visiting:

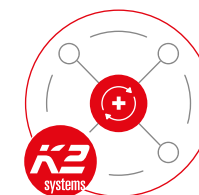
<https://k2-systems.com/en-US/base-camp>

- ▶ Webinars
- ▶ Videos
- ▶ Exhibitions
- ▶ Trainings and Roadshows
- ▶ Downloads

Welcome to K2 Base - where you design your solar project.

Whether you have a flat roof or a pitched roof, you can easily create your project design with our CrossRail, CrossRail Shared Rail, D-Dome Railless² and MiniRail XPress systems.

- ▶ Continue to enjoy continuously updated and platform-independent online software free of charge
- ▶ Improved calculation criteria
- ▶ Planning with satellite images from Google Maps
- ▶ Graphic drawing tools for roofs and module fields
- ▶ Detailed loads and ballast planning
- ▶ User account with project memory
- ▶ Instant access from anywhere
- ▶ Very easy determination of obstructions and restricted areas
- ▶ Allows several roofs in one project
- ▶ Exact data for orientation and size



NEW! K2+

K2+ enables you to transfer project data from Base directly to the SolarEdge Designer, SMA Sunny Design or Fronius Solar Configurator, where you can continue working with the data already captured. This saves a considerable amount of time!

Systems Overview

		Comp Shingle	Tile	Trapezoidal sheet metal	Standing seam roof
Pitched Roof Systems					
▶ CrossRail System	7	●	●	○	●
▶ Shared Rail System	13	●	○	○	●
▶ Tilt Up System	19	●	○	○	●
▶ MiniRail XPress System	25	○	○	●	○
Flat Roof Systems					
▶ D-Dome Railless ² System	29	●	●	●	
▶ Tilt Up System	19	●	○	○	
		● Suitable	○ Unsuitable / not integrated		
Ground Mounted Systems					
▶ Ground Mount System	34				

Warranty

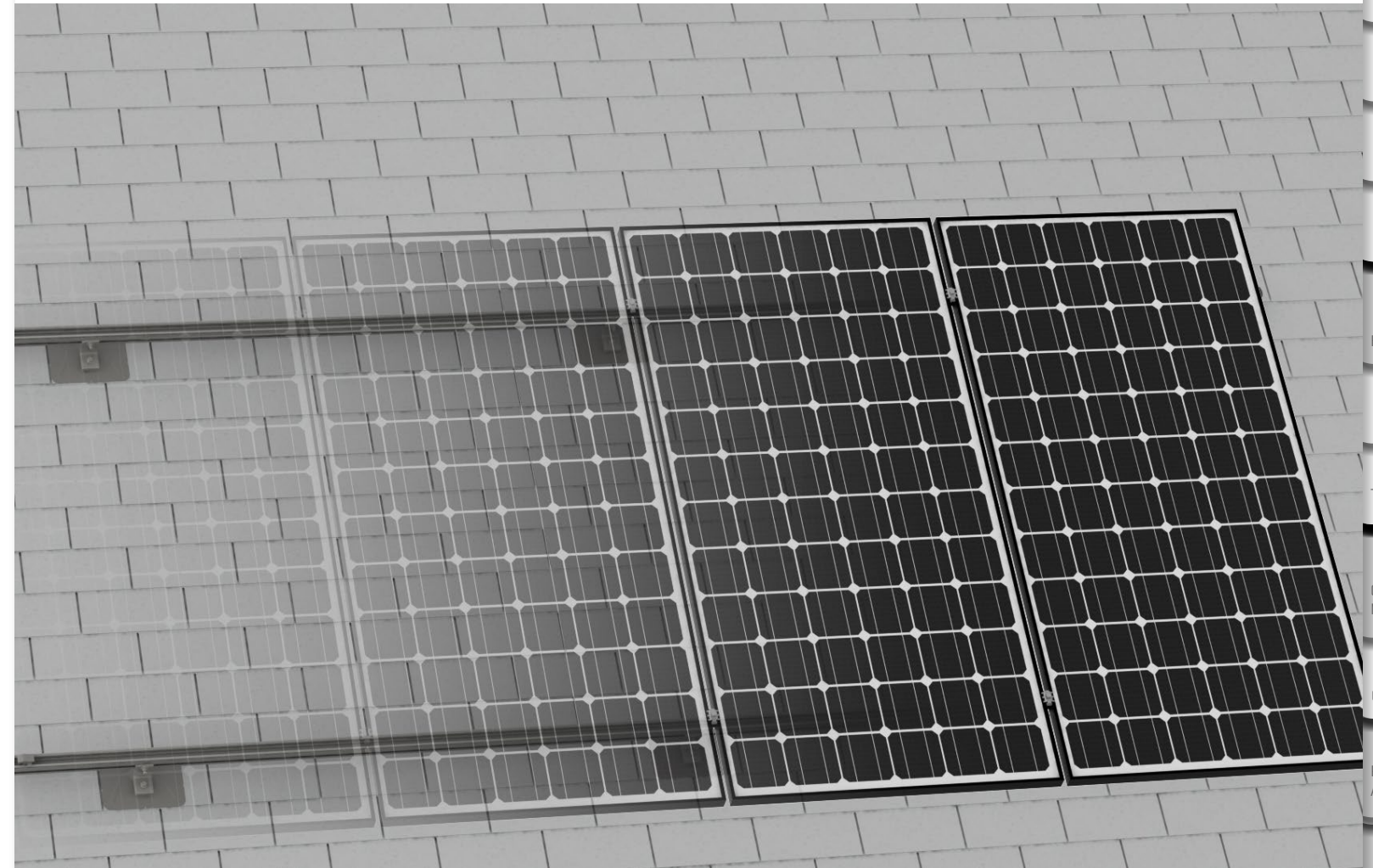
We offer a 25-year warranty on all K2 components in systems.

Pallet Delivery

Many mounting systems are delivered in pallets to save space and costs.



CrossRail System



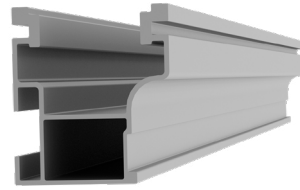
- ▶ High quality, German-engineered system optimized for residential installation
- ▶ MK3 mounting hardware simplifies module installation - fast, easy and secure
- ▶ L-Foot provides adjustability and compatibility with common roof types
- ▶ 100% code compliant, structural validation for all solar states
- ▶ 4 rail sizes available to suit all structural conditions
- ▶ Fast installation with minimal component count result in low total installed cost
- ▶ Simple to design using our code compliant Base Design Tool
- ▶ Use 2 innovative components to turn this system into Shared Rail or Tilt Up



- SYSTEM
- PITCHED ROOF
- CrossRail
- Shared Rail
- Tilt Up
- MiniRail
- FLAT ROOF
- D-Dome R²
- Tilt Up
- GROUND MOUNTED
- Ground Mount
- ROOF ATTACHMENTS
- ACCESSORIES
- TERMS AND CONDITIONS
- CONTACT

CrossRail System

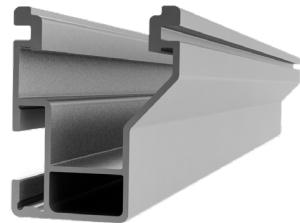
CrossRail 44-X



Part Number	Description	Specs	Box Qty
4000019	CrossRail 44-X 166", Mill	Weight: 0.47 lbs/ft (0.699 kg/m) Overall height: 1.73 in (44 mm) Material: 6000 Series Aluminum Finish: Mill or Dark Anodized	100
4000020	CrossRail 44-X 166", Dark		
4000021	CrossRail 44-X 180", Mill		
4000022	CrossRail 44-X 180", Dark		

The CrossRail 44-X is our newest rail and comes in lengths of 166 inches or 180 inches. The 44-X is a smaller rail profile than the 48-X but maintains the same structural integrity.

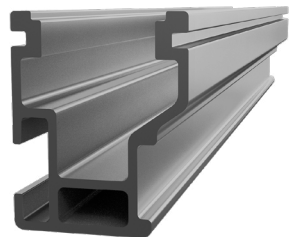
CrossRail 48-X



Part Number	Description	Specs	Box Qty
4000662	CrossRail 48-X 166", Mill	Weight: 0.56 lbs/ft (0.833 kg/m) Overall height: 1.89 in (48 mm) Material: 6000 Series Aluminum Finish: Mill or Dark Anodized	100
4000663	CrossRail 48-X 166", Dark		

The CrossRail 48-X is our most popular rail and comes in lengths of 166 inches or 180 inches.

CrossRail 48-XL



Part Number	Description	Specs	Box Qty
4000695	CrossRail 48-XL 166", Mill	Weight: 0.76 lbs/ft (1.13 kg/m) Overall height: 1.89 in (48 mm) Material: 6000 Series Aluminum Finish: Mill or Dark Anodized	100
4000705	CrossRail 48-XL 166", Dark		

The CrossRail 48-XL is a stronger and heavier version of our 48-X. It's made to withstand heavier loads and more severe weather conditions. It is only available in a length of 166 inches.

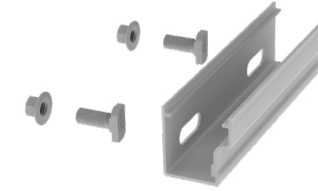
CrossRail 80



Part Number	Description	Specs	Box Qty
4000508	CrossRail 80 168" Rail Mill	Weight: 0.91 lbs/ft (1.335 kg/m) Overall height: 3.16 in (80.26 mm) Material: 6000 Series Aluminum Finish: Mill	100

The CrossRail 80 is a taller rail, which is best used with our CrossRail Ground Mount System. It is made in lengths of 168 inches.

Rail Connector Set



Part Number	Description	Specs	Box Qty	Pallet Qty
4000051	RailConn 44-X Struct Set, Mill	Material: Aluminum Finish: Mill or Dark Anodized Hardware: Stainless Steel	20	1,600
4000052	RailConn 44-X Struct Set, Dark			
4000385	RailConn CR 48-X,48-XL Struct Set, Mill		10	2,520
4000386	RailConn CR 48-X,48-XL Struct Set, Dark			
4001196	RailConn UL 2703 Set, CR80, Mill			

This Rail Connector Set is designed to support two CrossRail 44-X, 48-X, 48-XL or 80 rails. We pride ourselves on having the strongest quality rail connectors in the solar industry.

CrossRail Mid Clamp Set



Part Number	Description	Specs	Box Qty	Pallet Qty
4000601-H	CR MC Silver, 30-47mm, 13mm Hex	Material: Stainless Steel Finish: Silver or Dark	20	5,880
4000602-H	CR MC Dark, 30-47mm, 13mm Hex			
4000688-H	CR MC Silver, 40-50mm, 13mm Hex			
4000689-H	CR MC Dark, 40-50mm, 13mm Hex			

Our Mid Clamps are easy to install and have expandable technology that allow them to fit on module heights of 30-50mm.

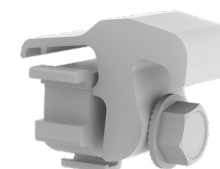
CrossRail End Clamp Set



Part Number	Description	Specs	Box Qty	Pallet Qty
4000090	CR EC Silver, 30-40mm	Material: Stainless Steel Finish: Silver or Dark	20	5,880
4000091	CR EC Dark, 30-40mm			
4000092	CR EC Silver, 40-47mm			
4000093	CR EC Dark, 40-47mm			

Our End Clamps are easy to install and have expandable technology that allow them to fit on module heights of 30-47 mm.

Yeti Clamp, Hidden EC for CR

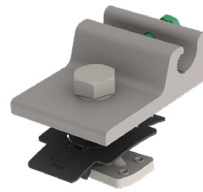


Part Number	Description	Specs	Box Qty	Pallet Qty
4000050-H	Yeti Hidden EC for CR, Mill, 13mm hex	Material: Stainless Steel Finish: Silver or Dark	50	10,500

The Yeti Clamp is K2's hidden end clamp. The Yeti Clamp maintains the structural integrity of our standard end clamp but provides enhanced aesthetics through interior clamping.

CrossRail System

Everest Ground Lug



Part Number	Description	Specs	Box Qty	Pallet Qty
4000006-H	Everest Ground Lug, Set, 13mm hex	Material: 6000 series aluminum with copper tin coating Hardware: Stainless Steel	50	7,500

The Everest Ground Lug is installed from the top of the rail rather than on the side channel, making it easier for installers to quickly and efficiently ground their systems.

L-Foot Slotted Set



Part Number	Description	Specs	Box Qty	Pallet Qty
4000630	L-Foot Slotted Set, Mill	Material: Aluminum Finish: Mill or Dark Anodized Hardware: Stainless Steel	20	5,880
4000631	L-Foot Slotted Set, Dark			

Our L-Foot is a diverse part that is used to attach our rails to our mounting products such as flashings and hooks.

CR Micro Inverter and Optimizer Mounting Kit



Part Number	Description	Specs	Box Qty	Pallet Qty
4000629-H	CR Micro, Optimizer & Accs Mounting Kit 13mm hex	Material: Stainless Steel	100	16,800

This kit makes it possible to attach a micro inverter or optimizer to the CrossRail by utilizing our MK3 technology.

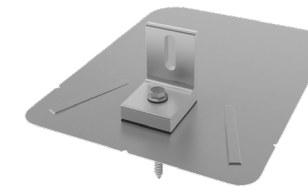
Aluminum End Clamp Set



Part Number	Description	Specs	Box Qty	Pallet Qty
4005344	CrossRail EC Silver, AL 32-33mm	Material: Stainless Steel Finish: Mill or Black Hardware: Stainless Steel	20	5,040
4005169	CrossRail EC Silver, AL 34-36mm			
4005290	CrossRail EC Silver, AL 37-38mm			
4005170	CrossRail EC Silver, AL 39-41mm			
4005291	CrossRail EC Silver, AL 42-44mm			
4005171	CrossRail EC Silver, AL 45-47mm			
4005292	CrossRail EC Silver, AL 48mm			
4005172	CrossRail EC Silver, AL 49-50mm			

We have several different aluminum end clamps in order to fit different module frames. They range from 30-50 mm.

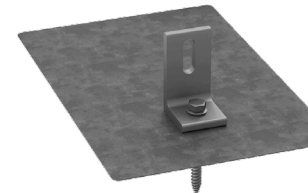
EverFlash XP Comp



Part Number	Description	Specs	Box Qty	Pallet Qty
4000061	EverFlash XP Comp Kit, Mill	Material: Galvalume Finish: Mill or Dark Hardware: Stainless Steel	20	1,680
4000060	EverFlash XP Comp Kit, Dark			
4000057	EverFlash XP Comp Kit, Mill LF, Dark Flash			

The EverFlash XP Comp is K2's very own comp shingle flashing.

EverFlash eComp Kit



Part Number	Description	Specs	Box Qty	Pallet Qty
4000366	EverFlash eComp Kit, Dark	Material: Galvalume Finish: Mill or Dark Hardware: Stainless Steel	20	1,680
4000367	EverFlash eComp Kit, Mill			
4000679	EverFlash eComp Kit, Mill LF, Dark Flash			

The EverFlash eComp Kit is a flashing kit made by our partners at EcoFasten.

End Cap for CrossRail



Part Number	Description	Specs	Box Qty
4000067	CrossRail EndCap, Black, CR 44-X	Material: Glass Fiber Reinforced Polyamide Finish: Black	100
4000431	CrossRail Flat EndCap, 48-X,48-XL		
4001221	CrossRail EndCap, Black, CR 80		

Our end cap is a simple piece that attaches to the end of the each rail, creating a clean, and flush look for your racking system.

CrossRail Sleeve



Part Number	Description	Specs	Box Qty
4000583	CrossRail 3" Black Sleeve 48-X,48-XL	Material: Glass Fiber Reinforced Polyamide Finish: Black	280

The CrossRail Sleeve is applicable to our 48-X and 48-XL rails.

CrossRail System

TC Wire Clip



Part Number	Description	Specs	Box Qty
4000069	TC Top Channel Wire Clip, Black	Material: Polyamide Finish: Black	50

The TC Wire Clip is K2's very own wire management solution. Eliminate the use of zip ties and snap this piece right on top of the CrossRail.

External Omega Cable Clip



Part Number	Description	Specs	Box Qty
4005394	Wire Management Clip, Omega, Black	Material: Polyamide Finish: Black	100

The Omega Cable Clip is a third-party polyamide wire management clip that is simple to install and durable.

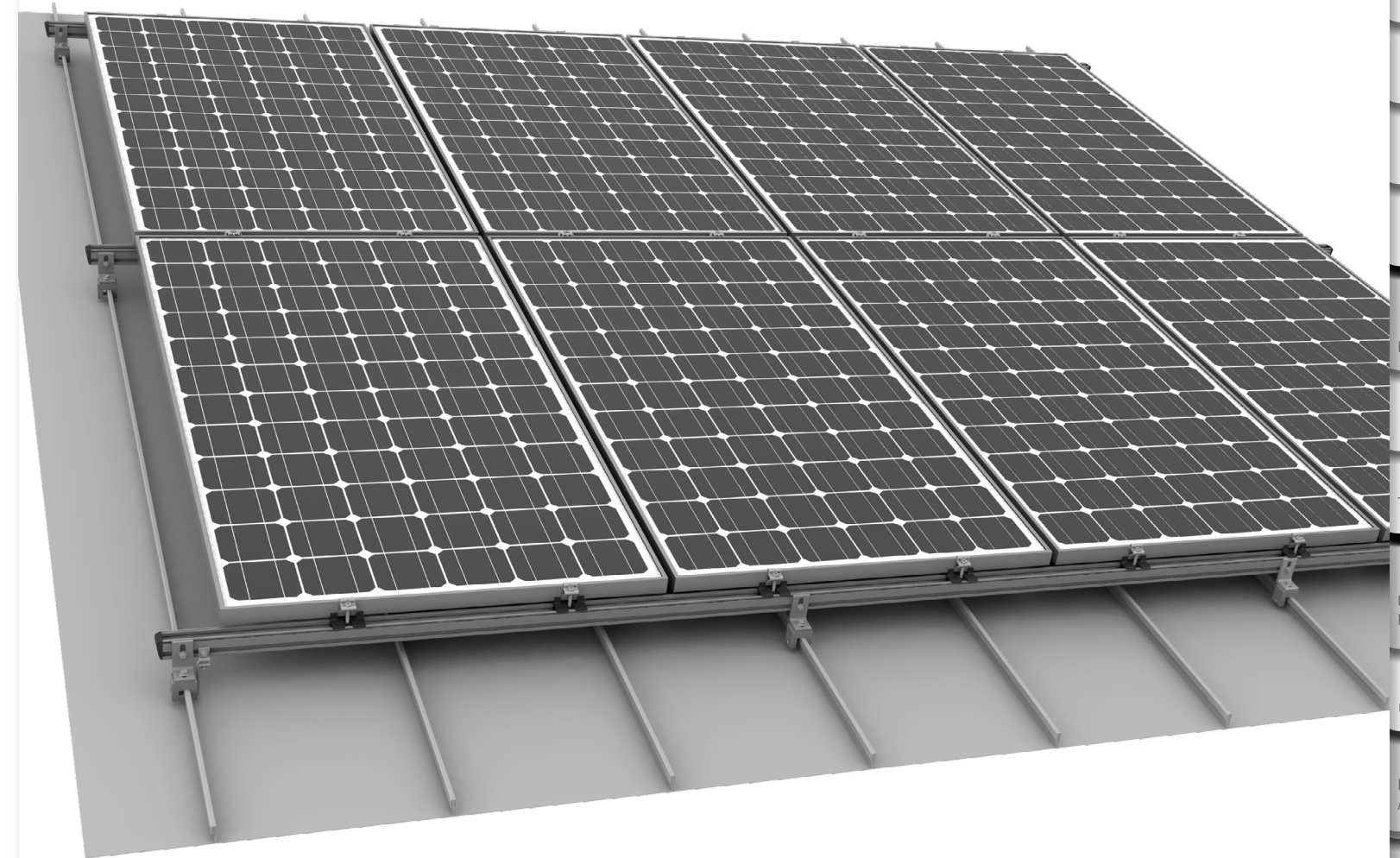
HEYClip SunRunner Cable Clip



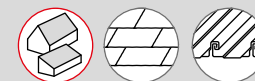
Part Number	Description	Specs	Box Qty
4000382	HEYClip SunRunner Cable Clip SS, S6404	Material: Polyamide Finish: Black	100

The HEYClip is a third-party stainless steel wire management clip that is simple to install and durable.

CrossRail Shared Rail System



- ▶ High quality, German-engineered system optimized for residential installation
- ▶ Beneficial for small 2 row arrays
- ▶ Reduction in rail and roof attachments allows for competitive pricing
- ▶ Uses universal CrossRail components
- ▶ MK3 mounting hardware simplifies module installation - fast, easy and secure
- ▶ L-Foot provides adjustability and compatibility with common roof types
- ▶ 100% code compliant, structural validation for all solar states
- ▶ 4 rail sizes available to suit all structural conditions



SYSTEM

PITCHED ROOF

CrossRail

Shared Rail

Tilt Up

MiniRail

FLAT ROOF

D-Dome R²

Tilt Up

GROUND MOUNTED

Ground Mount

ROOF ATTACHMENTS

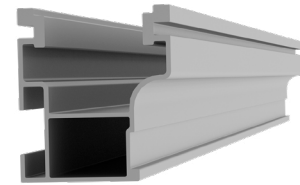
ACCESSORIES

TERMS AND CONDITIONS

CONTACT

CrossRail Shared Rail System

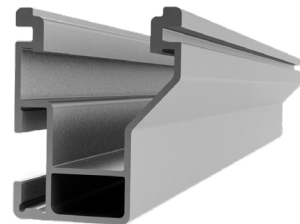
CrossRail 44-X



Part Number	Description	Specs	Box Qty
4000019	CrossRail 44-X 166", Mill	Weight: 0.47 lbs/ft (0.699 kg/m) Overall height: 1.73 in (44 mm) Material: 6000 Series Aluminum Finish: Mill or Dark Anodized	100
4000020	CrossRail 44-X 166", Dark		
4000021	CrossRail 44-X 180", Mill		
4000022	CrossRail 44-X 180", Dark		

The CrossRail 44-X is our newest rail and comes in lengths of 166 inches or 180 inches. The 44-X is a smaller rail profile than the 48-X but maintains the same structural integrity.

CrossRail 48-X



Part Number	Description	Specs	Box Qty
4000662	CrossRail 48-X 166", Mill	Weight: 0.56 lbs/ft (0.833 kg/m) Overall height: 1.89 in (48 mm) Material: 6000 Series Aluminum Finish: Mill or Dark Anodized	100
4000663	CrossRail 48-X 166", Dark		

The CrossRail 48-X is our most popular rail and comes in lengths of 166 inches or 180 inches.

CrossRail 48-XL



Part Number	Description	Specs	Box Qty
4000695	CrossRail 48-XL 166", Mill	Weight: 0.76 lbs/ft (1.13 kg/m) Overall height: 1.89 in (48 mm) Material: 6000 Series Aluminum Finish: Mill or Dark Anodized	100
4000705	CrossRail 48-XL 166", Dark		

The CrossRail 48-XL is a stronger and heavier version of our 48-X. It's made to withstand heavier loads and more severe weather conditions. It is only available in a length of 166 inches.

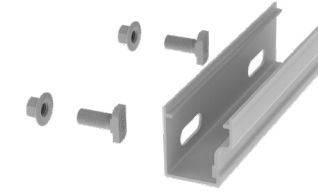
CrossRail 80



Part Number	Description	Specs	Box Qty
4000508	CrossRail 80 168" Rail Mill	Weight: 0.91 lbs/ft (1.335 kg/m) Overall height: 3.16 in (80.26 mm) Material: 6000 Series Aluminum Finish: Mill	100

The CrossRail 80 is a taller rail, which is best used with our CrossRail Ground Mount System. It is made in lengths of 168 inches.

Rail Connector Set



Part Number	Description	Specs	Box Qty	Pallet Qty
4000051	RailConn 44-X Struct Set, Mill	Material: Aluminum Finish: Mill or Dark Anodized Hardware: Stainless Steel	20	1,600
4000052	RailConn 44-X Struct Set, Dark			
4000385	RailConn CR 48-X,48-XL Struct Set, Mill		10	2,520
4000386	RailConn CR 48-X,48-XL Struct Set, Dark			
4001196	RailConn UL 2703 Set, CR80, Mill			

This Rail Connector Set is designed to support two CrossRail 44-X, 48-X, 48-XL or 80 rails. We pride ourselves on having the strongest quality rail connectors in the solar industry.

CrossRail Mid Clamp Set



Part Number	Description	Specs	Box Qty	Pallet Qty
4000601-H	CR MC Silver, 30-47mm, 13mm Hex	Material: Stainless Steel Finish: Silver or Dark	20	5,880
4000602-H	CR MC Dark, 30-47mm, 13mm Hex			
4000688-H	CR MC Silver, Shared RL 40-50mm, 13mm Hex			
4000689-H	CR MC Dark, Shared RL 40-50mm, 13mm Hex			

Our Mid Clamps are easy to install and have expandable technology that allow them to fit on module heights of 30-50mm.

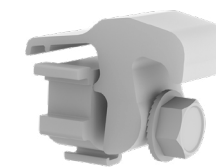
CrossRail End Clamp Set



Part Number	Description	Specs	Box Qty	Pallet Qty
4000090	CR EC Silver, 30-40mm	Material: Stainless Steel Finish: Silver or Dark	20	5,880
4000091	CR EC Dark, 30-40mm			
4000092	CR EC Silver, 40-47mm			
4000093	CR EC Dark, 40-47mm			

Our End Clamps are easy to install and have expandable technology that allow them to fit on module heights of 30-47 mm.

Yeti Clamp, Hidden EC for CR



Part Number	Description	Specs	Box Qty	Pallet Qty
4000050-H	Yeti Hidden EC for CR, Mill, 13mm hex	Material: Stainless Steel Finish: Silver or Dark	50	10,500

The Yeti Clamp is K2's hidden end clamp. The Yeti Clamp maintains the structural integrity of our standard end clamp but provides enhanced aesthetics through interior clamping.

CrossRail Shared Rail System

WEEB Lug 10.3



Part Number	Description	Specs	Box Qty	Pallet Qty
4000622	WEEB Lug 10.3	Material: Tin Plated Copper Hardware: Stainless Steel	20	30,000

The WEEB Lug 10.3 is installed on the side channel, making it easier for installers to quickly and efficiently ground their systems with Shared Rail.

L-Foot Slotted Set



Part Number	Description	Specs	Box Qty	Pallet Qty
4000630	L-Foot Slotted Set, Mill	Material: Aluminum Finish: Mill or Dark Anodized Hardware: Stainless Steel	20	5,880
4000631	L-Foot Slotted Set, Dark			

Our L-Foot is a diverse part that is used to attach our rails to our mounting products such as flashings and hooks.

CR Micro Inverter and Optimizer Mounting Kit



Part Number	Description	Specs	Box Qty	Pallet Qty
4000629-H	CR Micro, Optimizer & Accs Mounting Kit 13mm hex	Material: Stainless Steel	100	16,800

This kit makes it possible to attach a microinverter or optimizer to the CrossRail by utilizing our MK3 technology.

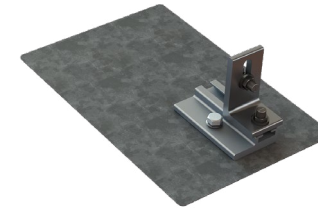
Aluminum End Clamp Set



Part Number	Description	Specs	Box Qty	Pallet Qty
4005344	CrossRail EC Silver, AL 32-33mm	Material: Stainless Steel Finish: Mill or Black Hardware: Stainless Steel		
4005169	CrossRail EC Silver, AL 34-36mm			
4005290	CrossRail EC Silver, AL 37-38mm			
4005170	CrossRail EC Silver, AL 39-41mm			
4005291	CrossRail EC Silver, AL 42-44mm			
4005171	CrossRail EC Silver, AL 45-47mm			
4005292	CrossRail EC Silver, AL 48mm			
4005172	CrossRail EC Silver, AL 49-50mm			

We have several different aluminum end clamps in order to fit different module frames. They range from 30-50 mm.

EverFlash eComp + SR Slide Kit



Part Number	Description	Specs	Box Qty	Pallet Qty
4000015	EverFlash eComp + SR Slide Kit, Mill	Material: Galvalume Finish: Mill or Dark Hardware: Stainless Steel	10	840
4000027	EverFlash eComp + SR Slide Kit, Dark			
4000029	EverFlash eComp + SR Slide Kit, Mill LF, Dark Flash			

The EverFlash eComp + SR Slide Kit is an adjustable flashing kit made by our partners at EcoFasten.

End Cap for CrossRail



Part Number	Description	Specs	Box Qty
4000067	CrossRail EndCap, Black, CR 44-X	Material: Glass Fiber Reinforced Polyamide Finish: Black	100
4000431	CrossRail Flat EndCap, 48-X,48-XL		
4001221	CrossRail EndCap, Black, CR 80		

Our end cap is a simple piece that attaches to the end of the each rail, creating a clean, and flush look for your racking system.

CrossRail Sleeve



Part Number	Description	Specs	Box Qty
4000583	CrossRail 3" Black Sleeve 48-X,48-XL	Material: Glass Fiber Reinforced Polyamide Finish: Black	100

The CrossRail Sleeve is applicable to our 48-X and 48-XL rails.

Shared Rail Clamp Add-On



Part Number	Description	Specs	Box Qty
4000609	Shared Rail Clamp Add-On, Slide In, 10 mm	Material: Glass Fiber Reinforced Polyamide	50
4000632	Shared Rail Clamp Add-On, Slide In		

The Add-On slides on to the shared rail mid and end clamps. This part is crucial to create the Shared Rail System.

CrossRail Shared Rail System

Array Skirt



Part Number	Description	Specs	Box Qty
4000493	Array Skirt Portrait 40" Single Module	Material: Aluminum Finish: Dark Anodized Hardware: Stainless Steel	100

The Array Skirt is an element that's used to create a nicer aesthetic. Much like a bed skirt, the Array Skirt hides everything underneath the modules.

TC Wire Clip



Part Number	Description	Specs	Box Qty
4000069	TC Top Channel Wire Clip, Black	Material: Polyamide Finish: Black	50

The TC Wire Clip is K2's very own wire management solution. Eliminate the use of zip ties and snap this piece right on top of the CrossRail.

External Omega Cable Clip



Part Number	Description	Specs	Box Qty
4005394	Wire Management Clip, Omega, Black	Material: Polyamide Finish: Black	100

The Omega Cable Clip is a third-party polyamide wire management clip that is simple to install and durable.

HEYClip SunRunner Cable Clip



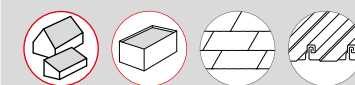
Part Number	Description	Specs	Box Qty
4000382	HEYClip SunRunner Cable Clip SS, S6404	Material: Polyamide Finish: Black	100

The HEYClip is a third-party stainless steel wire management clip that is simple to install and durable.

CrossRail Tilt Up System



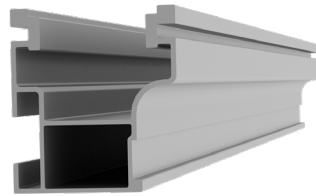
- ▶ High quality, German-engineered system optimized for residential installation
- ▶ MK3 mounting hardware simplifies module installation - fast easy and secure
- ▶ L-Foot provides adjustability and compatibility with common roof types
- ▶ 100% code-compliant, structural validation for all solar states
- ▶ 4 rail sizes available to suit all structural conditions
- ▶ Fast installation with minimal component count result in low total installed cost
- ▶ Flexible to several tilt angles and preengineered for 7, 10, 15 degree tilts
- ▶ Same rail used as tilt legs - minimize rail waste by using scrap as tilt legs



- SYSTEM
- PITCHED ROOF
- CrossRail
- Shared Rail
- Tilt Up
- MiniRail
- FLAT ROOF
- D-Dome R²
- Tilt Up
- GROUND MOUNTED
- Ground Mount
- ROOF ATTACHMENTS
- ACCESSORIES
- TERMS AND CONDITIONS
- CONTACT

CrossRail Tilt Up System

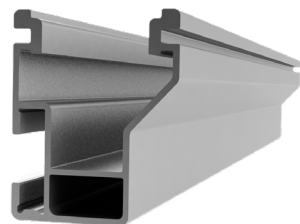
CrossRail 44-X



Part Number	Description	Specs	Box Qty
4000019	CrossRail 44-X 166", Mill	Weight: 0.47 lbs/ft (0.699 kg/m) Overall height: 1.73 in (44 mm) Material: 6000 Series Aluminum Finish: Mill or Dark Anodized	100
4000020	CrossRail 44-X 166", Dark		
4000021	CrossRail 44-X 180", Mill		
4000022	CrossRail 44-X 180", Dark		

The CrossRail 44-X is our newest rail and comes in lengths of 166 inches or 180 inches. The 44-X is a smaller rail profile than the 48-X but maintains the same structural integrity.

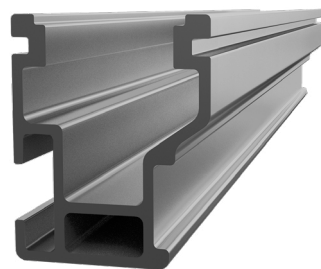
CrossRail 48-X



Part Number	Description	Specs	Box Qty
4000662	CrossRail 48-X 166", Mill	Weight: 0.56 lbs/ft (0.833 kg/m) Overall height: 1.89 in (48 mm) Material: 6000 Series Aluminum Finish: Mill or Dark Anodized	100
4000663	CrossRail 48-X 166", Dark		

The CrossRail 48-X is our most popular rail and comes in lengths of 166 inches or 180 inches.

CrossRail 48-XL



Part Number	Description	Specs	Box Qty
4000695	CrossRail 48-XL 166", Mill	Weight: 0.76 lbs/ft (1.13 kg/m) Overall height: 1.89 in (48 mm) Material: 6000 Series Aluminum Finish: Mill or Dark Anodized	100
4000705	CrossRail 48-XL 166", Dark		

The CrossRail 48-XL is a stronger and heavier version of our 48-X. It's made to withstand heavier loads and more severe weather conditions. It is only available in a length of 166 inches.

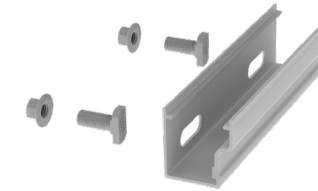
CrossRail 80



Part Number	Description	Specs	Box Qty
4000508	CrossRail 80 168" Rail Mill	Weight: 0.91 lbs/ft (1.335 kg/m) Overall height: 3.16 in (80.26 mm) Material: 6000 Series Aluminum Finish: Mill	100

The CrossRail 80 is a taller rail, which is best used with our CrossRail Ground Mount System. It is made in lengths of 168 inches.

Rail Connector Set



Part Number	Description	Specs	Box Qty	Pallet Qty
4000051	RailConn 44-X Struct Set, Mill	Material: Aluminum Finish: Mill or Dark Anodized Hardware: Stainless Steel	20	1,600
4000052	RailConn 44-X Struct Set, Dark			
4000385	RailConn CR 48-X,48-XL Struct Set, Mill		10	2,520
4000386	RailConn CR 48-X,48-XL Struct Set, Dark			
4001196	RailConn UL 2703 Set, CR80, Mill			

This Rail Connector Set is designed to support two CrossRail 44-X, 48-X, 48-XL or 80 rails. We pride ourselves on having the strongest quality rail connectors in the solar industry.

CrossRail Mid Clamp Set



Part Number	Description	Specs	Box Qty	Pallet Qty
4000601-H	CR MC Silver, 30-47mm, 13mm Hex	Material: Stainless Steel Finish: Silver or Dark	20	5,880
4000602-H	CR MC Dark, 30-47mm, 13mm Hex			
4000688-H	CR MC Silver, 40-50mm, 13mm Hex			
4000689-H	CR MC Dark, 40-50mm, 13mm Hex			

Our Mid Clamps are easy to install and have expandable technology that allow them to fit on module heights of 30-50mm.

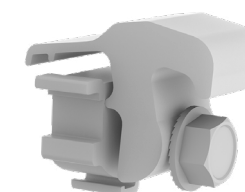
CrossRail End Clamp Set



Part Number	Description	Specs	Box Qty	Pallet Qty
4000090	CR EC Silver, 30-40mm	Material: Stainless Steel Finish: Silver or Dark	20	5,880
4000091	CR EC Dark, 30-40mm			
4000092	CR EC Silver, 40-47mm			
4000093	CR EC Dark, 40-47mm			

Our End Clamps are easy to install and have expandable technology that allow them to fit on module heights of 30-47 mm.

Yeti Clamp, Hidden EC for CR

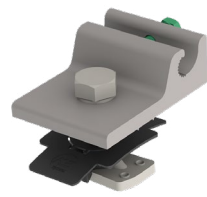


Part Number	Description	Specs	Box Qty	Pallet Qty
4000050-H	Yeti Hidden EC for CR, Mill, 13mm hex	Material: Stainless Steel Finish: Silver or Dark	20	5,880

The Yeti Clamp is K2's version of the hidden end clamp. The Yeti Clamp maintains the structural integrity of our standard end clamp but provides enhanced aesthetics through interior clamping.

CrossRail Tilt Up System

Everest Ground Lug



Part Number	Description	Specs	Box Qty	Pallet Qty
4000006-H	Everst Ground Lug, Set, 13mm hex	Material: 6000 series aluminum with copper tin coating Hardware: Stainless Steel	50	7,500

The Everest Ground Lug is installed from the top of the rail rather than on the side channel, making it easier for installers to quickly and efficiently ground their systems.

L-Foot Slotted Set



Part Number	Description	Specs	Box Qty	Pallet Qty
4000630	L-Foot Slotted Set, Mill	Material: Aluminum Finish: Mill or Dark Anodized Hardware: Stainless Steel	20	5,880
4000631	L-Foot Slotted Set, Dark			

Our L-Foot is a diverse part that is used to attach our rails to our mounting products such as flashings and hooks.

T-Foot X



Part Number	Description	Specs	Box Qty	Pallet Qty
4000080	T-Foot X 6" Set, Mill	Material: Aluminum Finish: Mill Hardware: Stainless Steel	20	5,880

The T-Foot X is a great mounting solution that allows for a lot of flexibility with its 6" height.

CR Micro Inverter and Optimizer Mounting Kit



Part Number	Description	Specs	Box Qty	Pallet Qty
4000629-H	CR Micro, Optimizer & Accs Mounting Kit 13mm hex	Material: Stainless Steel	100	16,800

This kit makes it possible to attach a microinverter or optimizer to the CrossRail by utilizing our MK3 technology.

Tilt Connector Set



Part Number	Description	Specs	Box Qty	Pallet Qty
4000505	CrossRail Tilt Connector Set	Material: Aluminum Finish: Mill or Dark Anodized Hardware: Stainless Steel	40	4,800

The Tilt Connector connects two pieces of rail together at 90 degrees forming the triangular base of the system.

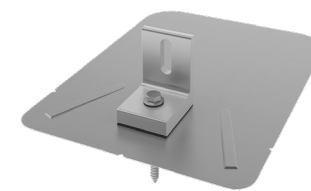
Climber Set w/ Hole



Part Number	Description	Specs	Box Qty	Pallet Qty
4006042-H	CrossRail Climber Set w/Hole,13 mm hex	Material: Aluminum Finish: Mill Hardware: Stainless Steel	20	5,040
4006043	CR 44-X Climber Set w/Hole,13 mm hex			

The Climber Set connects the base structure to the other set of rails. It attaches to the MK3 channel of the base and the T-Bolt channel of the module rails.

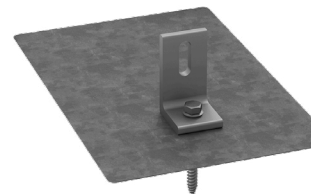
EverFlash XP Comp



Part Number	Description	Specs	Box Qty	Pallet Qty
4000061	EverFlash XP Comp Kit, Mill	Material: Galvalume Finish: Mill or Dark Hardware: Stainless Steel	20	1,680
4000060	EverFlash XP Comp Kit, Dark			
4000057	EverFlash XP Comp Kit, Mill LF, Dark Flash			

The EverFlash XP Comp is K2's very own comp shingle flashing.

EverFlash eComp Kit



Part Number	Description	Specs	Box Qty	Pallet Qty
4000366	EverFlash eComp Kit, Dark	Material: Galvalume Finish: Mill or Dark Hardware: Stainless Steel	20	1,680
4000367	EverFlash eComp Kit, Mill			
4000679	EverFlash eComp Kit, Mill LF, Dark Flash			

The EverFlash eComp Kit is a flashing kit made by our partners at EcoFasten.

Aluminum End Clamp Set



Part Number	Description	Specs	Box Qty	Pallet Qty
4005344	CrossRail EC Silver, AL 32-33mm	Material: Stainless Steel Finish: Mill or Black Hardware: Stainless Steel	20	5,040
4005169	CrossRail EC Silver, AL 34-36mm			
4005290	CrossRail EC Silver, AL 37-38mm			
4005170	CrossRail EC Silver, AL 39-41mm			
4005291	CrossRail EC Silver, AL 42-44mm			
4005171	CrossRail EC Silver, AL 45-47mm			
4005292	CrossRail EC Silver, AL 48mm			
4005172	CrossRail EC Silver, AL 49-50mm			

We have several different aluminum end clamps in order to fit different module frames. They range from 30-50 mm.

CrossRail Tilt Up System

End Cap for CrossRail



Part Number	Description	Specs	Box Qty
4000067	CrossRail EndCap, Black, CR 44-X	Material: Glass Fiber Reinforced Polyamide Finish: Black	100
4000431	CrossRail Flat EndCap, 48-X,48-XL		
4001221	CrossRail EndCap, Black, CR 80		

Our end cap is a simple piece that attaches to the end of the each rail, creating a clean, and flush look for your racking system.

TC Wire Clip



Part Number	Description	Specs	Box Qty
4000069	TC Top Channel Wire Clip, Black	Material: Polyamide Finish: Black	50

The TC Wire Clip is K2's very own wire management solution. Eliminate the use of zip ties and snap this piece right on top of the CrossRail.

External Omega Cable Clip



Part Number	Description	Specs	Box Qty
4005394	Wire Management Clip, Omega, Black	Material: Polyamide Finish: Black	100

The Omega Cable Clip is a third-party polyamide wire management clip that is simple to install and durable.

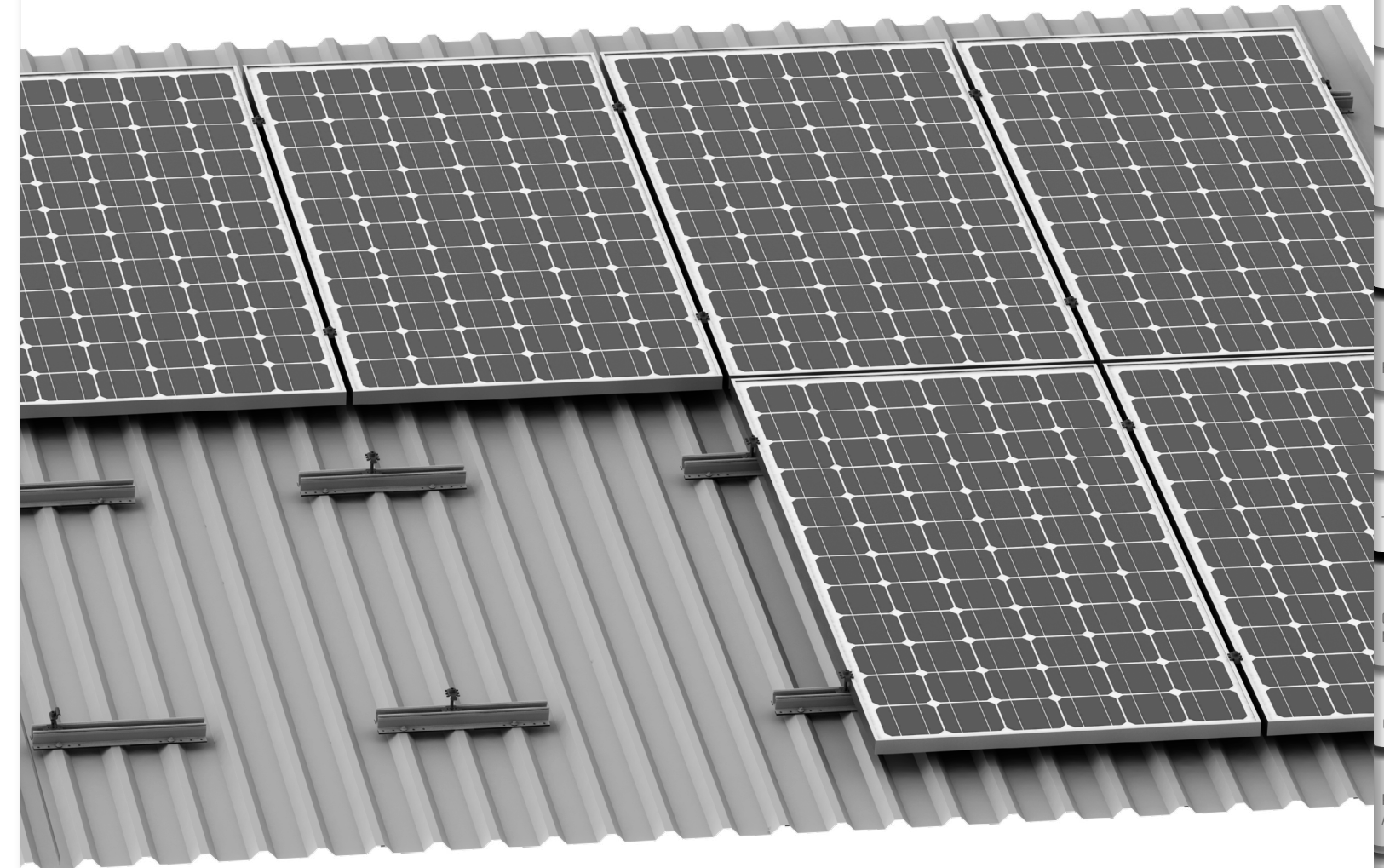
HEYClip SunRunner Cable Clip



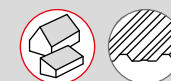
Part Number	Description	Specs	Box Qty
4000382	HEYClip SunRunner Cable Clip SS, S6404	Material: Polyamide Finish: Black	100

The HEYClip is a third-party stainless steel wire management clip that is simple to install and durable.

MiniRail XPRESS System



- ▶ High quality, German-engineered system optimized for residential installation
- ▶ Design flexibility with 17" sections of rail
- ▶ Redundant waterproofing with EPDM backed base and washers
- ▶ Simple 3 part installation
- ▶ MK3 mounting hardware simplifies module installation - fast, easy and secure
- ▶ 100% code compliant, structural validation for all solar states
- ▶ Minimize pallet and freight costs
- ▶ Simple to design using our code compliant online design tool, Base
- ▶ Can be installed in portrait or landscape



SYSTEM

PITCHED ROOF

CrossRail

Shared Rail

Tilt Up

MiniRail

FLAT ROOF

D-Dome R²

Tilt Up

GROUND MOUNTED

Ground Mount

ROOF ATTACHMENTS

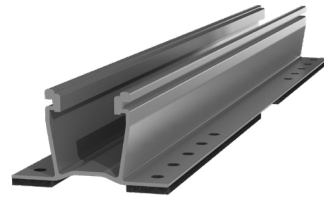
ACCESSORIES

TERMS AND CONDITIONS

CONTACT

MiniRail XPress System

MiniRail XPress Base



Part Number	Description	Specs	Box Qty
4000667	MiniRail XPress Base 17in w/EPDM, Mill	Material: Aluminum Finish: Mill	50

The MiniRail XPress Base is a 17 inch section of rail (with EPDM inserts on the bottom for waterproofing) that attaches to the peaks of the trapezoidal metal roof.

CrossRail Mid Clamp Set



Part Number	Description	Specs	Box Qty	Pallet Qty
4000601-H	CR MC Silver, 30-47mm, 13mm Hex	Material: Stainless Steel Finish: Silver or Dark	20	5,880
4000602-H	CR MC Dark, 30-47mm, 13mm Hex			
4000688-H	CR MC Silver, 40-50mm, 13mm Hex			
4000689-H	CR MC Dark, 40-50mm, 13mm Hex			

Our Mid Clamps are easy to install and have expandable technology that allow them to fit on module heights of 30-50mm.

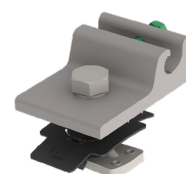
CrossRail End Clamp Set



Part Number	Description	Specs	Box Qty	Pallet Qty
4000090	CR EC Silver, 30-40mm	Material: Stainless Steel Finish: Silver or Dark	20	5,880
4000091	CR EC Dark, 30-40mm			
4000092	CR EC Silver, 40-47mm			
4000093	CR EC Dark, 40-47mm			

Our End Clamps are easy to install and have expandable technology that allow them to fit on module heights of 30-47 mm.

Everest Ground Lug



Part Number	Description	Specs	Box Qty	Pallet Qty
4000006-H	Everest Ground Lug, Set, 13mm hex	Material: 6000 series aluminum with copper tin coating Hardware: Stainless Steel	50	7,500

The Everest Ground Lug is installed from the top of the rail rather than on the side channel, making it easier for installers to quickly and efficiently ground their systems.

IlSCO Lug



Part Number	Description	Specs
4000960	ILSCO, SGB-4, 4-14 SOL-STR	Material: Tin Plated Aluminum Finish: Mill Hardware: Stainless Steel

Third-party Ground Lug made by ILSCO compatible with MiniRail XPress and Dome Railless² Systems.

CR Micro Inverter and Optimizer Mounting Kit



Part Number	Description	Specs	Box Qty	Pallet Qty
4000629-H	CR Micro, Optimizer & Accs Mounting Kit 13mm hex	Material: Stainless Steel	100	16,800

This kit makes it possible to attach a microinverter or optimizer to the CrossRail by utilizing our MK3 technology.

JF3 Screw w/ EPDM



Part Number	Description	Specs	Box Qty
4000672	JF3 Screw w/ EPDM, 29g, 25mm	Material: Stainless Steel Sealing: EPDM Wrench Size: 8mm	100

This is our self-tapping screw with an EPDM backing that is used to secure and waterproof the MiniRail XPress System. The JF3 screw can be used with a minimum of 26 gauge metal roof.

Aluminum End Clamp Set



Part Number	Description	Specs	Box Qty	Pallet Qty
4005344	CrossRail EC Silver, AL 32-33mm	Material: Stainless Steel Finish: Mill or Black Hardware: Stainless Steel	20	5,040
4005169	CrossRail EC Silver, AL 34-36mm			
4005290	CrossRail EC Silver, AL 37-38mm			
4005170	CrossRail EC Silver, AL 39-41mm			
4005291	CrossRail EC Silver, AL 42-44mm			
4005171	CrossRail EC Silver, AL 45-47mm			
4005292	CrossRail EC Silver, AL 48mm			
4005172	CrossRail EC Silver, AL 49-50mm			

We have several different aluminum end clamps in order to fit different module frames. They range from 30-50 mm.

MiniRail XPress System

TC Wire Clip



Part Number	Description	Specs	Box Qty
4000069	TC Top Channel Wire Clip, Black	Material: Polyamide Finish: Black	50

The TC Wire Clip is K2's very own wire management solution. Eliminate the use of zip ties and snap this piece right on top of the CrossRail.

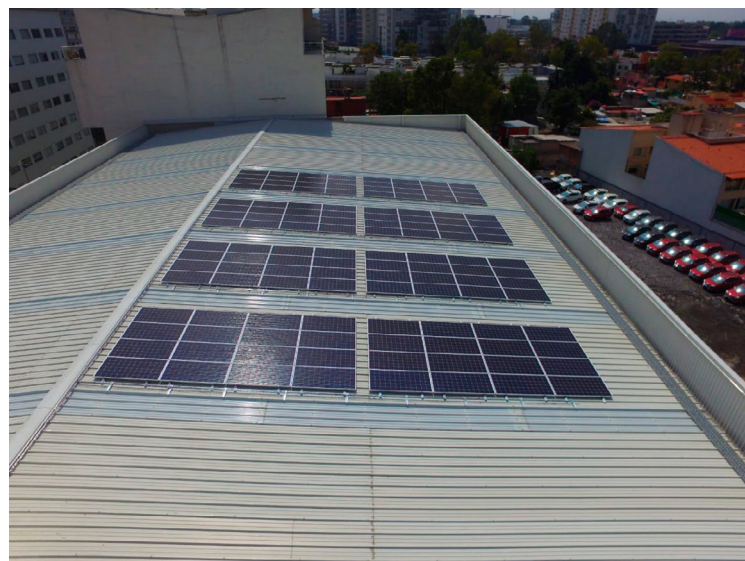
HEYClip SunRunner Cable Clip



Part Number	Description	Specs	Box Qty
4000382	HEYClip SunRunner Cable Clip SS, S6404	Material: Polyamide Finish: Black	100

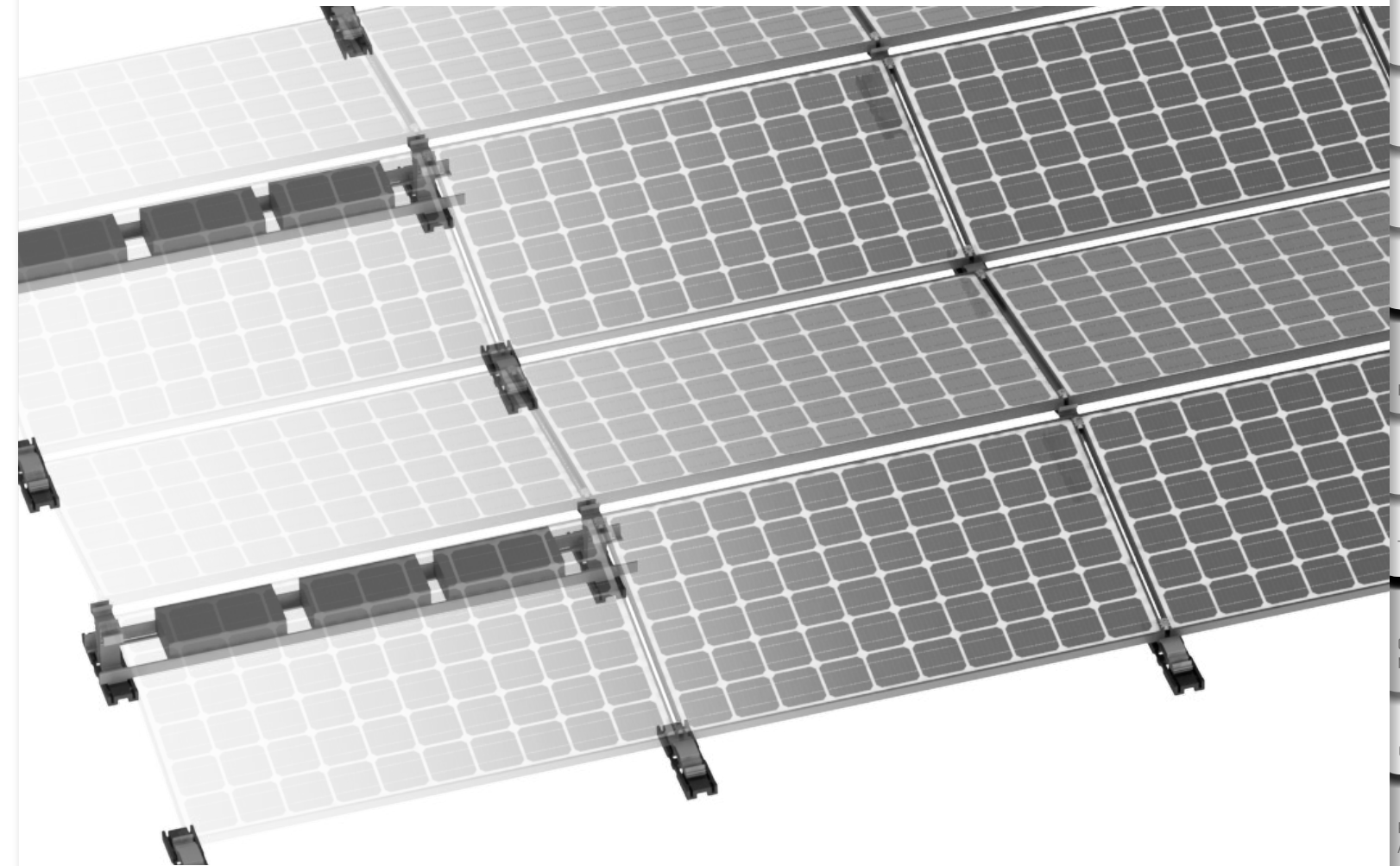
The HEYClip is a third-party stainless steel wire management clip that is simple to install and durable.

References



▶ Caliza CDMX did this MiniRail XPress System installation.

D-Dome Railless² System



- ▶ Innovative dual-tilt low ballast system suitable for all orientations
- ▶ Modular components delivered to the site enable simple, fast installation
- ▶ Low component count and fast assembly reduce total installed cost
- ▶ 10° elevation angle
- ▶ Low wind loads / Fewer ballast blocks
- ▶ Maximize module density
- ▶ 100% code compliant, structural validation for all solar states
- ▶ Wind tunnel tested by leading structural aerodynamic labs
- ▶ Integrated grounding solution



SYSTEM

PITCHED ROOF

CrossRail

Shared Rail

Tilt Up

MiniRail

FLAT ROOF

D-Dome R²

Tilt Up

GROUND MOUNTED

Ground Mount

ROOF ATTACHMENTS

ACCESSORIES

TERMS AND CONDITIONS

CONTACT

D-Dome Railless² System

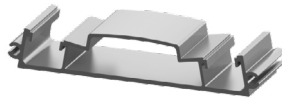
Dome R² Peak



Part Number	Description	Specs
4000592	Dome R ² Peak	Material: Aluminum

The Peak is the center piece that allows the modules to be placed in a tilt position.

Dome R² Base



Part Number	Description	Specs
4000593	Dome R ² Base	Material: Aluminum

The Base is the piece that the low end of the modules attach to.

Dome R² Roof Protection Mat



Part Number	Description	Specs
4000594	Dome R ² Roof Protection Mat	Material: Recycled Rubber

This is what the Dome R² Base and Peak rests on so that the roof is protected from the metal.

Aluminum End Clamp Set



Part Number	Description	Specs	Box Qty	Pallet Qty
4005344	CrossRail EC Silver, AL 32-33mm	Material: Stainless Steel Finish: Mill or Black Hardware: Stainless Steel		
4005169	CrossRail EC Silver, AL 34-36mm			
4005290	CrossRail EC Silver, AL 37-38mm			
4005170	CrossRail EC Silver, AL 39-41mm			
4005291	CrossRail EC Silver, AL 42-44mm			
4005171	CrossRail EC Silver, AL 45-47mm			
4005292	CrossRail EC Silver, AL 48mm			
4005172	CrossRail EC Silver, AL 49-50mm			

We have several different aluminum end clamps in order to fit different module frames. They range from 30-50 mm.

WEEB Clip BMC



Part Number	Description	Specs
4000469	WEEB Clip BMC	Material: Stainless Steel

This is an additional piece that attaches to the aluminum clamp in order for it to bond.

Dome Mid Clamp



Part Number	Description	Specs	Box Qty	Pallet Qty
4000601-H	CR MC Silver, 30-47mm, 13mm hex	Material: Stainless Steel Finish: Silver Hardware: Stainless Steel	20	5,880
4000602-H	CR MC Dark, 30-47mm, 13mm hex			
4000603	DOME MC Silver, SS UL2703+ 30-33mm			
4000604	DOME MC Silver, SS UL2703+ 34-39mm			
4000605	DOME MC Silver, SS UL2703+ 40-44mm			
4000606	DOME MC Silver, SS UL2703+ 45-50mm			

We have several different end clamps in order to fit different module frames. They range from 30-50 mm.

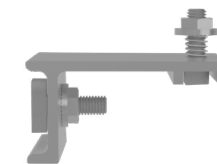
IlSCO Lug



Part Number	Description	Specs
4000960	ILSCO, SGB-4, 4-14 SOL-STR	Material: Tin Plated Aluminum Finish: Mill Hardware: Stainless Steel

Third-party Ground Lug made by ILSCO compatible with MiniRail XPress and Dome Railless² Systems.

Dome R² Optimizer Mounting Bracket Kit

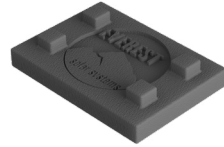


Part Number	Description	Specs
4000646	Dome R ² Optimizer Mounting Bracket Kit	Material: Stainless Steel

This kit makes it possible to attach a microinverter or optimizer to the Dome Peak.

D-Dome Railless² System

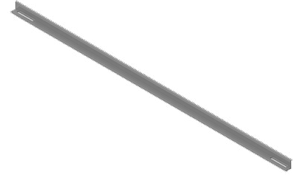
Dome R² Roof Spacer Pad



Part Number	Description	Specs
4000636	Dome R ² Roof Spacer Pad	Material: Recycled Rubber

This piece is like a shim, it fits on the roof protection mat and allows the height of the peak or base to be adjusted to accommodate for undulations in the roof.

Dome R² Porter



Part Number	Description	Specs	Box Qty	Pallet Qty
4000568	Dome R ² Ballast Porter, 61-67in	Material: Aluminum	20	5,880
4000570	Dome R ² Ballast Porter, 76.8-83.2in			

The Porters are placed parallel to each other to create a section for the ballast blocks to weigh down the system.

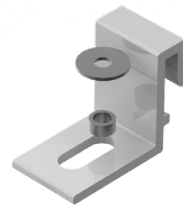
Dome R² Corner Strut



Part Number	Description	Specs	Box Qty	Pallet Qty
4000637	Dome R ² Corner Strut Kit	Material: Aluminum	100	3,000

This piece adds rigidity to the corners of Dome R² arrays. It has a secondary function where it can be used to add more ballast blocks when necessary.

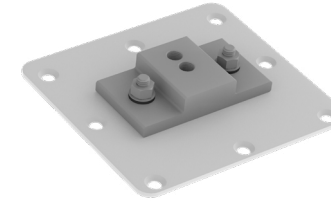
Dome R² Anchor Bracket



Part Number	Description	Specs
4000639	Dome R ² Anchor Bracket for Porter Kit	Material: Aluminum Hardware: Stainless Steel

Should you choose to anchor your Dome System, you may use our anchor bracket along with a third-party anchor base.

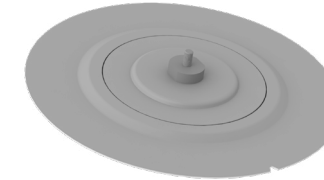
Eco Fast Eco65



Part Number	Description	Specs
4001442	Eco Fasten Eco65	Material: Aluminum Hardware: Stainless Steel

This is an optional third-party product that is used with our anchor bracket to secure the system to the roof if ballasting is not enough for your area.

OMG PowerGrip Plus



Part Number	Description	Specs
4000335	OMG PowerGrip Plus	Material: Aluminum Hardware: Stainless Steel

This is an optional third-party product that is used with our anchor bracket to secure the system to the roof if ballasting is not enough for your area.

References



► D-Dome installation on Stone Brewing Co. in Escondido, CA.

CrossRail Ground Mount System



- ▶ Suitable for most soil types
- ▶ Pre-engineered system:
- ▶ 4 rows in landscape
- ▶ 20-35° tilt
- ▶ 0-50 lbs snow
- ▶ 100-130 mph wind
- ▶ Low cost system with easy installation



CrossRail 80



Part Number	Description	Specs	Box Qty
4000508	CrossRail 80 168" Rail Mill	Weight: 0.91 lbs/ft (1.335 kg/m) Overall height: 3.16 in (80.26 mm) Material: 6000 Series Aluminum Finish: Mill	100

The CrossRail 80 is a taller rail, which is best used with our CrossRail Ground Mount System. It is made in lengths of 168 inches.

CrossRail Mid Clamp Set



Part Number	Description	Specs	Box Qty	Pallet Qty
4000601-H	CR MC Silver, 30-47mm, 13mm Hex	Material: Stainless Steel Finish: Silver or Dark	20	5,880
4000602-H	CR MC Dark, 30-47mm, 13mm Hex			
4000688-H	CR MC Silver, 40-50mm, 13mm Hex			
4000689-H	CR MC Dark, 40-50mm, 13mm Hex			

Our Mid Clamps are easy to install and have expandable technology that allow them to fit on module heights of 30-50mm.

CrossRail End Clamp Set



Part Number	Description	Specs	Box Qty	Pallet Qty
4000090	CR EC Silver, 30-40mm	Material: Stainless Steel Finish: Silver or Dark	20	5,880
4000091	CR EC Dark, 30-40mm			
4000092	CR EC Silver, 40-47mm			
4000093	CR EC Dark, 40-47mm			

Our End Clamps are easy to install and have expandable technology that allow them to fit on module heights of 30-47 mm.

Rail Connector Set



Part Number	Description	Specs	Box Qty	Pallet Qty
4001196	RailConn UL 2703 Set, CR80, Mill	Material: Aluminum Finish: Mill or Dark Anodized	10	2,520

This Rail Connector Set is designed to support two CR 80 rails..

CrossRail Ground Mount System

Everest Pipe Bracket Kit



Part Number	Description	Specs	Box Qty
4000100	Everest 1.5" Pipe-Bracket Kit	Material: Stainless Steel, Galvanized Steel	10
4000330	Everest 2" Pipe-Bracket Kit		

The Pipe Bracket Kit supports the piping in the Ground Mount structure.

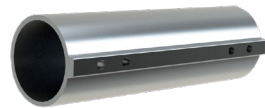
JF3 Screw w/ EPDM



Part Number	Description	Specs	Box Qty
4000672	JF3 Screw w/EPDM, 29g, 25mm	Material: Stainless Steel Sealing: EPDM Wrench Size: 8mm	100

This is our self-tapping screw with an EPDM backing that is used to secure and waterproof the Ground Mount System.

Hollaender No. 70 External Coupling



Part Number	Description	Specs
4000333	Hollaender No. 70 External Coupling	Material: Aluminum

Third-party product that attaches two pieces of pipe together.

Hollaender 5EXT Extended Barrel Tee OR Hollaender 5EX



Part Number	Description	Specs
4000101	Hollaender 5EXT Extended Barrel Tee	Material: Aluminum
4000102	Hollaender 5EX	

Third-party product that attaches three pieces of pipe together.

Hollaender 17E Adjustable Elbow



Part Number	Description	Specs
4000334	Hollaender 17E Adjustable Elbow	Material: Aluminum

The elbow attaches to a pipe and allows it to have some adjustability.

Aluminum End Clamp Set



Part Number	Description	Specs	Box Qty	Pallet Qty
4005344	CrossRail EC Silver, AL 32-33mm	Material: Stainless Steel Finish: Mill or Black Hardware: Stainless Steel	20	5,040
4005169	CrossRail EC Silver, AL 34-36mm			
4005290	CrossRail EC Silver, AL 37-38mm			
4005170	CrossRail EC Silver, AL 39-41mm			
4005291	CrossRail EC Silver, AL 42-44mm			
4005171	CrossRail EC Silver, AL 45-47mm			
4005292	CrossRail EC Silver, AL 48mm			
4005172	CrossRail EC Silver, AL 49-50mm			

We have several different aluminum end clamps in order to fit different module frames. They range from 30-50 mm.

End Cap for CrossRail 80



Part Number	Description	Specs	Box Qty
4001221	CrossRail EndCap, Black, CR 80	Material: Glass Fiber Reinforced Polyamide Finish: Black	100

Our end cap is a simple piece that attaches to the end of the each rail, creating a clean, and flush look for your racking system.

TC Wire Clip



Part Number	Description	Specs	Box Qty
4000069	TC Top Channel Wire Clip, Black	Material: Polyamide Finish: Black	50

The TC Wire Clip is K2's very own wire management solution. Eliminate the use of zip ties and snap this piece right on top of the CrossRail.

External Omega Cable Clip



Part Number	Description	Specs	Box Qty
4005394	Wire Management Clip, Omega, Black	Material: Polyamide Finish: Black	100

The Omega Cable Clip is a third-party polyamide wire management clip that is simple to install and durable.

CrossRail Ground Mount System

HEYClip SunRunner Cable Clip



Part Number	Description	Specs	Box Qty
4000382	HEYClip SunRunner Cable Clip SS, S6404	Material: Polyamide Finish: Black	100
4000108	HEYClip SunRunner Cable Clip SS, S6405		

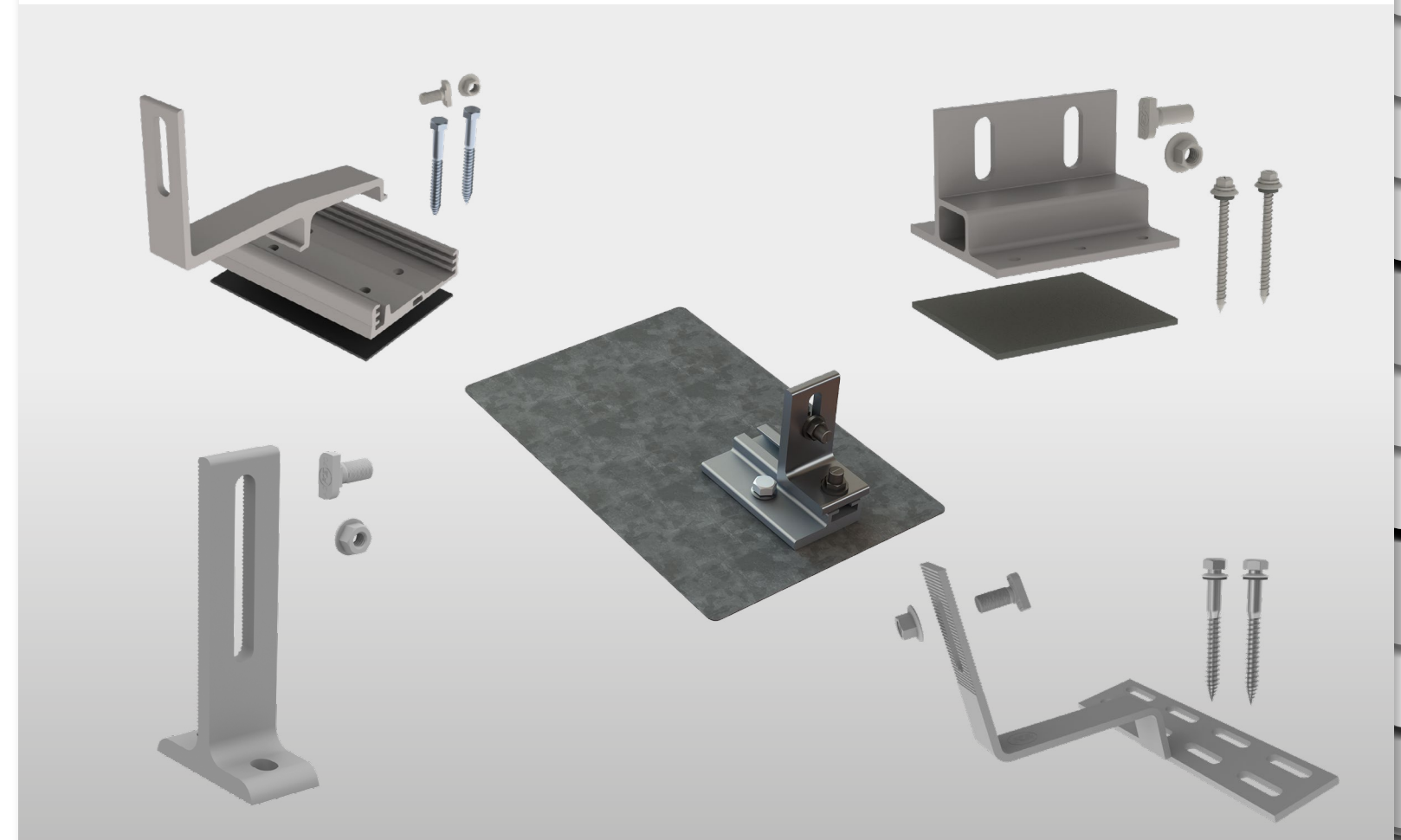
The HEYClip is a third-party stainless steel wire management clip that is simple to install and durable.

References

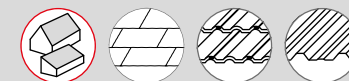
- ▶ Ground Mount installation by Sattler Solar.



Roof Attachments



- ▶ K2 Systems has a variety of roof attachments that are compatible with multiple roof types including tile and comp shingle.

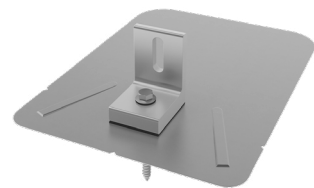


- SYSTEM
- PITCHED ROOF
- CrossRail
- Shared Rail
- Tilt Up
- MiniRail
- FLAT ROOF
- D-Dome R²
- Tilt Up
- GROUND MOUNTED
- Ground Mount
- ROOF ATTACHMENTS
- ACCESSORIES
- TERMS AND CONDITIONS
- CONTACT

Roof Attachments

Composition Shingle Roof

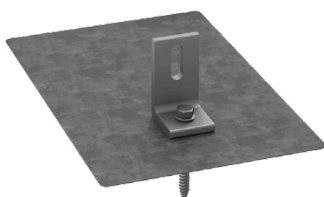
EverFlash XP Comp



Part Number	Description	Specs	Box Qty	Pallet Qty
4000061	EverFlash XP Comp Kit, Mill	Material: Galvalume Finish: Mill or Dark Hardware: Stainless Steel	20	1,680
4000060	EverFlash XP Comp Kit, Dark			
4000057	EverFlash XP Comp Kit, Mill LF, Dark Flash			

The EverFlash XP Comp is K2's very own comp shingle flashing.

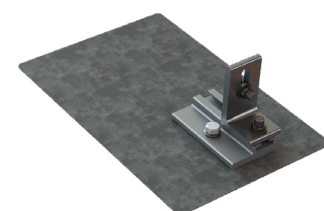
EverFlash eComp Kit



Part Number	Description	Specs	Box Qty	Pallet Qty
4000366	EverFlash eComp Kit, Dark	Material: Galvalume Finish: Mill or Dark Hardware: Stainless Steel	20	1,680
4000367	EverFlash eComp Kit, Mill			
4000679	EverFlash eComp Kit, Mill LF, Dark Flash			

The EverFlash eComp Kit is a flashing kit made by our partners at EcoFasten.

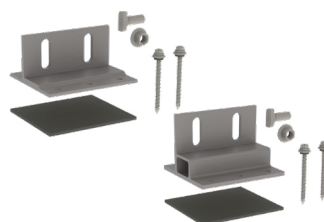
EverFlash eComp + SR Slide Kit



Part Number	Description	Specs	Box Qty	Pallet Qty
4000015	EverFlash eComp + SR Slide Kit, Mill	Material: Galvalume Finish: Mill or Dark Hardware: Stainless Steel	10	840
4000027	EverFlash eComp + SR Slide Kit, Dark			
4000029	EverFlash eComp + SR Slide Kit, Mill LF, Dark Flash			

The EverFlash eComp + SR Slide Kit is an adjustable flashing kit made by our partners at EcoFasten.

Splice Foot X & XL

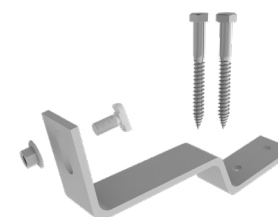


Part Number	Description	Specs	Box Qty	Pallet Qty
4000113	Splice Foot X Kit, Mill	Material: Aluminum Finish: Mill or Dark Hardware: Stainless Steel	20	840
4000162	Splice Foot XL Kit, Mill			

The Splice Foot X and XL can be used as a regular mount and/or a rail splice. The X is a shorter profile while the XL is taller and has a shelf. Both come with built in flexible flashing technology.

Tile Roof

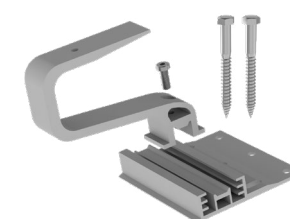
Flat Tile Hook



Part Number	Description	Specs	Box Qty	Pallet Qty
4000034	Flat Tile Hook, Set, W/ lags	Material: Aluminum Finish: Mill Hardware: Stainless Steel	20	1,280

This is one solid piece that easily installs onto tile roofs. This hook eliminates the need for the L-Foot as it has its own opening to attach the rail.

Tile Hook 3S



Part Number	Description	Specs	Box Qty	Pallet Qty
4001294	Tile Hook 3S Wide Base w/Hardware	Material: Aluminum Finish: Mill Hardware: Stainless Steel	20	1,500

The Tile Hook 3S slides into an adjustable mounting plate and easily installs onto tile roofs. The racking system is attached by placing the L-Foot on top of the hook.

Flat Tile Hook X



Part Number	Description	Specs	Box Qty	Pallet Qty
4000141	Flat Tile Hook X, Kit	Material: Stainless Steel Finish: Mill or Black Hardware: Stainless Steel	12	2,016

The Flat Tile Hook X is a cost effective hook with a longer reach making it compatible with all tile sizes.

Tile Hook 3L



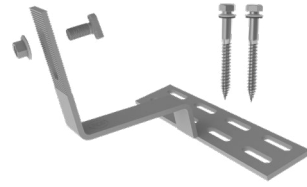
Part Number	Description	Specs	Box Qty	Pallet Qty
4000125	Tile Hook 3L Set, Mill, Butyl	Material: Stainless Steel Finish: Mill or Black Hardware: Stainless Steel	12	1,500

The Tile Hook 3L has three levels of height adjustability as well as east/west adjustability. RT flexible flashing technology is pre-installed on the base.

Roof Attachments

Tile Roof

Universal Standard Hook, 9" Base



Part Number	Description	Specs	Box Qty	Pallet Qty
4000140	Universal Standard Hook, 9" Base Kit	Material: Aluminum Finish: Mill	12	1,280

The wide base on this single piece welded hook allows for maximum adjustability.

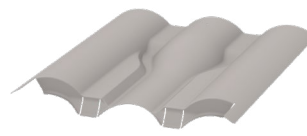
Universal Standard Hook +2, 5.5" Base



Part Number	Description	Specs	Box Qty	Pallet Qty
4000142	Universal Standard Hook +2, 5.5" Base	Material: Aluminum Finish: Mill	12	1,500

This universal hook has a slim design for less tile interference and minimal tile grinding.

EverFlash Tile Replacement Flashing

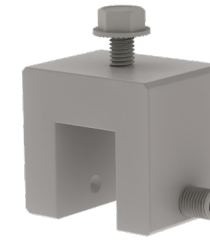


Part Number	Description	Specs	Box Qty	Pallet Qty
4000130	EverFlash Flat Tile - R, Mill	Material: Stainless Steel Finish: Mill or Black Hardware: Stainless Steel	20	1,500
4000131	EverFlash S Tile - R, Mill			
4000132	EverFlash W Tile - R, Mill			

K2's tile replacement flashings have a slide-in flashing design that minimizes tile removal. No tile interlocking is necessary as there are built-in tabs to secure the flashing into place.

Standing Seam Roof

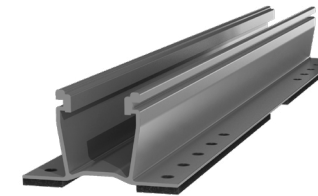
Standing Seam PowerClamp, Mini



Part Number	Description	Specs	Box Qty	Pallet Qty
4000016	Standing Seam PowerClamp Mini, Set	Material: Aluminum Finish: Mill	50	5,000
40000017	Standing Seam PowerClamp Standard, Set			

The Standing Seam PowerClamp is an aluminum part that is used to attach a racking system to a standing seam roof. The mini clamp uses one bullet screw to keep the clamp locked tight onto the roof.

MiniRail XPress Base



Part Number	Description	Specs	Box Qty
4000667	MiniRail XPress Base 17in w/EPDM, Mill	Material: Aluminum Finish: Mill	50

The MiniRail XPress Base is a 17 inch section of rail [with EPDM inserts on the bottom for waterproofing] that attaches to the peaks of the trapezoidal metal roof.

Flat Roof

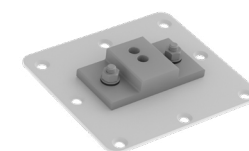
T-Foot X



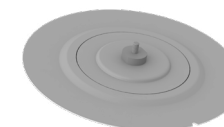
Part Number	Description	Specs	Box Qty	Pallet Qty
4000080	T-Foot X 6" Set, Mill	Material: Aluminum Finish: Mill Hardware: Stainless Steel	20	5,880

The T-Foot X is a great mounting solution that allows for a lot of flexibility with its 6" height.

Anchors

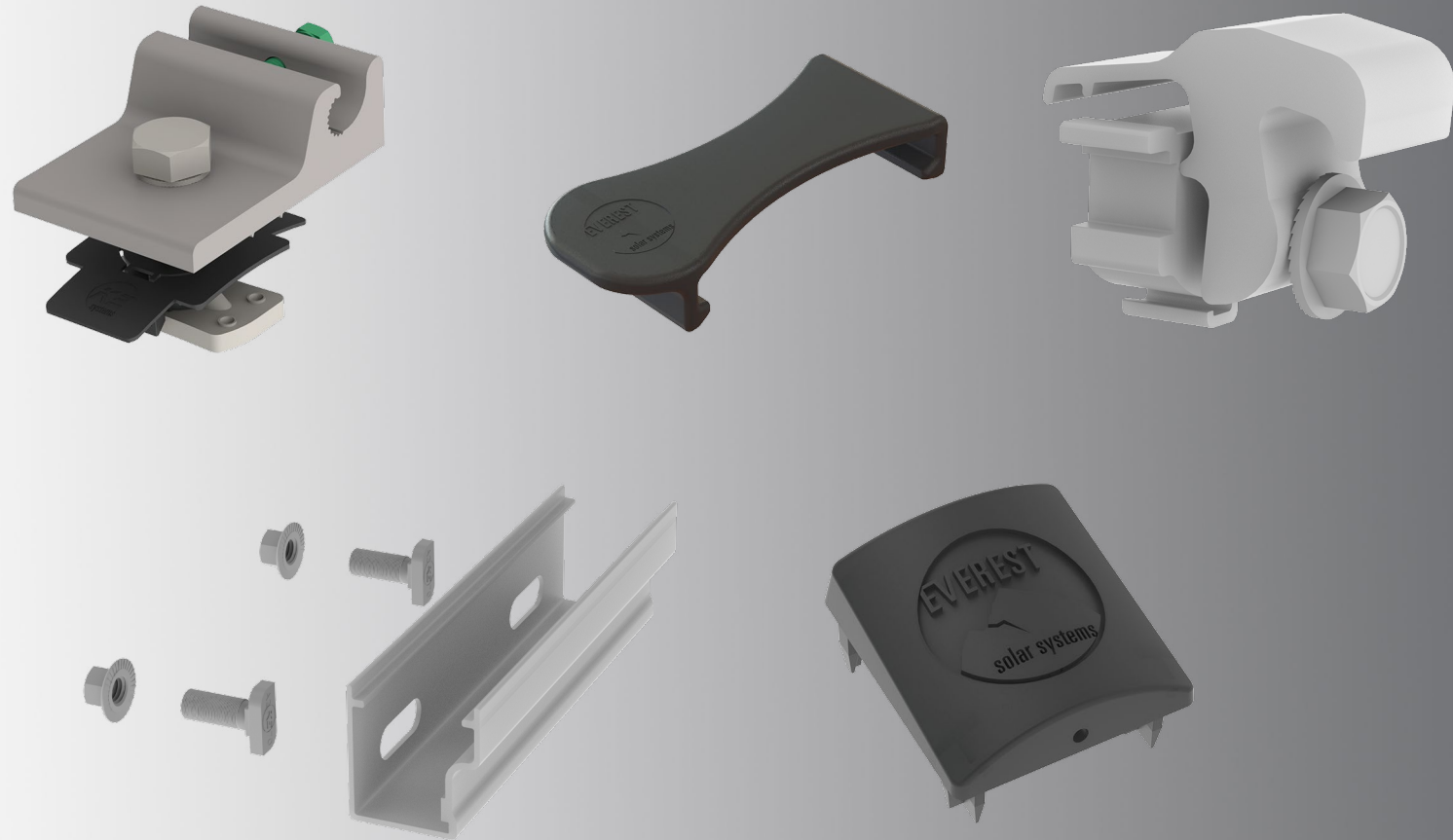


Part Number	Description	Specs
4001442	Eco Fasten Eco65 with Porter Bracket	Material: Aluminum Hardware: Stainless Steel
4000335	OMG PowerGrip Plus with Porter Bracket	



This is an optional third-party product that is used with our anchor bracket to secure the system to the roof if ballasting is not enough for your area.

Accessories



- ▶ All clamps
- ▶ Rail Connectors
- ▶ Grounding Lugs
- ▶ Wire management
- ▶ Aesthetics
- ▶ Nuts & Bolts
- ▶ ...and more!



Clamps

CrossRail Mid Clamp Set



Part Number	Description	Specs	Box Qty	Pallet Qty
4000601-H	CR MC Silver, 30-47mm, 13mm Hex	Material: Stainless Steel Finish: Silver or Dark	20	5,880
4000602-H	CR MC Dark, 30-47mm, 13mm Hex			
4000688-H	CR MC Silver, Shared RL 40-50mm, 13mm Hex			
4000689-H	CR MC Dark, Shared RL 40-50mm, 13mm Hex			

Our Mid Clamps are easy to install and have expandable technology that allow them to fit on module heights of 30-50mm.

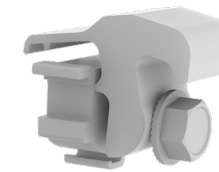
CrossRail End Clamp Set



Part Number	Description	Specs	Box Qty	Pallet Qty
4000090	CR EC Silver, 30-40mm	Material: Stainless Steel Finish: Silver or Dark	20	5,880
4000091	CR EC Dark, 30-40mm			
4000092	CR EC Silver, 40-47mm			
4000093	CR EC Dark, 40-47mm			

Our End Clamps are easy to install and have expandable technology that allow them to fit on module heights of 30-47 mm.

Yeti Clamp, Hidden EC for CR



Part Number	Description	Specs	Box Qty	Pallet Qty
4000050-H	Yeti Hidden EC for CR, Mill, 13mm hex	Material: Stainless Steel Finish: Silver or Dark	50	10,500

The Yeti Clamp is K2's hidden end clamp. The Yeti Clamp maintains the structural integrity of our standard end clamp but provides enhanced aesthetics through interior clamping.

Aluminum End Clamp Set



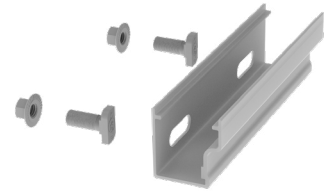
Part Number	Description	Specs	Box Qty	Pallet Qty
4005344	CrossRail EC Silver, AL 32-33mm	Material: Stainless Steel Finish: Mill or Black Hardware: Stainless Steel	20	5,040
4005169	CrossRail EC Silver, AL 34-36mm			
4005290	CrossRail EC Silver, AL 37-38mm			
4005170	CrossRail EC Silver, AL 39-41mm			
4005291	CrossRail EC Silver, AL 42-44mm			
4005171	CrossRail EC Silver, AL 45-47mm			
4005292	CrossRail EC Silver, AL 48mm			
4005172	CrossRail EC Silver, AL 49-50mm			

We have several different aluminum end clamps in order to fit different module frames. They range from 30-50 mm.

Accessories

Rail Connectors

Rail Connector Set

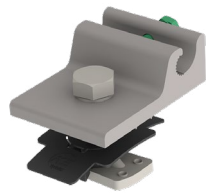


Part Number	Description	Specs	Box Qty	Pallet Qty
4000051	RailConn 44-X Struct Set, Mill	Material: Aluminum Finish: Mill or Dark Anodized Hardware: Stainless Steel	20	1,600
4000052	RailConn 44-X Struct Set, Dark			
4000385	RailConn CR 48-X,48-XL Struct Set, Mill			
4000386	RailConn CR 48-X,48-XL Struct Set, Dark			
4001196	RailConn UL 2703 Set, CR80, Mill		10	2,520

This Rail Connector Set is designed to support two CrossRail 44-X, 48-X, 48-XL or 80 rails. We pride ourselves on having the strongest quality rail connectors in the solar industry.

Grounding Lugs

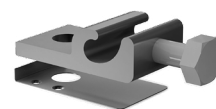
Everest Ground Lug



Part Number	Description	Specs	Box Qty	Pallet Qty
4000006-H	Everst Ground Lug, Set, 13mm hex	Material: 6000 series aluminum with copper tin coating Hardware: Stainless Steel	50	7,500

The Everest Ground Lug is installed from the top of the rail rather than on the side channel, making it easier for installers to quickly and efficiently ground their systems.

WEEB Lug 10.3



Part Number	Description	Specs	Box Qty	Pallet Qty
4000622	WEEB Lug 10.3	Material: Tin Plated Copper Hardware: Stainless Steel	20	30,000

The WEEB Lug 10.3 is installed on the side channel, making it easier for installers to quickly and efficiently ground their systems with Shared Rail.

IlSCO Lug



Part Number	Description	Specs
4000960	ILSCO, SGB-4, 4-14 SOL-STR	Material: Tin Plated Aluminum Finish: Mill Hardware: Stainless Steel

Third-party Ground Lug made by ILSCO compatible with MiniRail XPress and Dome Railless² Systems.

WEEB Clip BMC



Part Number	Description	Specs
4000469	WEEB Clip BMC	Material: Stainless Steel

This is an additional piece that attaches to the aluminum clamp in order for it to bond.

Wire Management

TC Wire Clip



Part Number	Description	Specs	Box Qty
4000069	TC Top Channel Wire Clip, Black	Material: Polyamide Finish: Black	50

The TC Wire Clip is K2's very own wire management solution. Eliminate the use of zip ties and snap this piece right on top of the CrossRail.

External Omega Cable Clip



Part Number	Description	Specs	Box Qty
4005394	Wire Management Clip, Omega, Black	Material: Polyamide Finish: Black	100

The Omega Cable Clip is a third-party polyamide wire management clip that is simple to install and durable.

HEYClip SunRunner Cable Clip



Part Number	Description	Specs	Box Qty
4000382	HEYClip SunRunner Cable Clip SS, S6404	Material: Polyamide Finish: Black	100

The HEYClip is a third-party stainless steel wire management clip that is simple to install and durable.

Accessories

Micro Inverter & Optimizer Mounting Kits

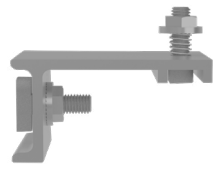
CR Micro Inverter and Optimizer Mounting Kit



Part Number	Description	Specs	Box Qty	Pallet Qty
4000629-H	CR Micro, Optimizer & Accs Mounting Kit 13mm hex	Material: Stainless Steel	100	16,800

This kit makes it possible to attach a micro inverter or optimizer to the CrossRail by utilizing our MK3 technology.

Dome R² Optimizer Mounting Bracket Kit



Part Number	Description	Specs
4000646	Dome R ² Optimizer Mounting Bracket Kit	Material: Stainless Steel

This kit makes it possible to attach a microinverter or optimizer to the Dome Peak.

Aesthetics

End Cap for CrossRail



Part Number	Description	Specs	Box Qty
4000067	CrossRail EndCap, Black, CR 44-X	Material: Glass Fiber Reinforced Polyamide Finish: Black	100
4000431	CrossRail Flat EndCap, 48-X,48-XL		
4001221	CrossRail EndCap, Black, CR 80		

Our end cap is a simple piece that attaches to the end of the each rail, creating a clean, and flush look for your racking system.

CrossRail Sleeve



Part Number	Description	Specs	Box Qty
4000583	CrossRail 3" Black Sleeve 48-X,48-XL	Material: Glass Fiber Reinforced Polyamide Finish: Black	280

The CrossRail Sleeve is applicable to our 48-X and 48-XL rails.

Nuts & Bolts

JF3 Screw w/ EPDM



Part Number	Description	Specs	Box Qty
4000672	JF3 Screw w/ EPDM, 29g, 25mm	Material: Stainless Steel Sealing: EPDM Wrench Size: 8mm	100

This is our self-tapping screw with an EPDM backing that is used to secure and waterproof the MiniRail XPress System. The JF3 screw can be used with a minimum of 26 gauge metal roof.

T-Bolt & Nut Kits



Part Number	Description	Specs	Box Qty
4000122	13mm x 25mm Bonding T-Bolt Kit	Material: Stainless Steel	100
4000048	13mm x 25mm T-Bolt Kit		
4000624	T-Bolt 1/2" 20mm SS with Nut		

The T-Bolt and serrated hex nut hardware are essential for all of our systems and products.

Shared Rail

Shared Rail Clamp Add-On



Part Number	Description	Specs	Box Qty
4000609	Shared Rail Clamp Add-On, Slide In, 10 mm	Material: Glass Fiber Reinforced Polyamide	50
4000632	Shared Rail Clamp Add-On, Slide In		

The Add-On slides on to the shared rail mid and end clamps. This part is crucial to create the Shared Rail System.

Array Skirt



Part Number	Description	Specs	Box Qty
4000493	Array Skirt Portrait 40" Single Module	Material: Aluminum Finish: Dark Anodized Hardware: Stainless Steel	100

The Array Skirt is an element that's used to create a nicer aesthetic. Much like a bed skirt, the Array Skirt hides everything underneath the modules.

Accessories

Tilt Up

Tilt Connector Set



Part Number	Description	Specs	Box Qty	Pallet Qty
4000505	CrossRail Tilt Connector Set	Material: Aluminum Finish: Mill or Dark Anodized Hardware: Stainless Steel	40	4,800

The Tilt Connector connects two pieces of rail together at 90 degrees forming the triangular base of the system.

Climber Set w/ Hole

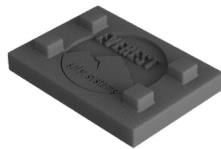


Part Number	Description	Specs	Box Qty	Pallet Qty
4006042-H	CrossRail Climber Set w/Hole,13 mm hex	Material: Aluminum Finish: Mill Hardware: Stainless Steel	20	5,040
4006043	CR 44-X Climber Set w/Hole,13 mm hex			

The Climber Set connects the base structure to the other set of rails. It attaches to the MK3 channel of the base and the T-Bolt channel of the module rails.

D-Dome Railless²

Dome R² Roof Spacer Pad



Part Number	Description	Specs
4000636	Dome R ² Roof Spacer Pad	Material: Recycled Rubber

This piece is like a shim, it fits on the roof protection mat and allows the height of the peak or base to be adjusted to accommodate for undulations in the roof.

Terms and Conditions of K2 Systems

The "K2 Systems, LLC General Terms and Conditions of Sale" set forth hereafter (these "T&Cs" apply to all orders placed by Customer to Supplier for products and services. These T&Cs are effective as of April 5, 2020, and apply to any sales on or after this date, until superseded by a new version of these T&Cs.

1. GENERAL PROVISIONS

1.1 All sales of the products and services of K2 Systems LLC ("Supplier") to buyers ("Customer"; Supplier and Customer are referred to individually as a "Party" or jointly as the "Parties") of K2 Systems LLC brand products are subject to these T&Cs. Supplier reserves the right to make changes to its products and pricing at any time without notice. Supplier reserves the right to make changes to these T&Cs which shall apply to all sales from and after the effective date of such revised T&Cs.

1.2 All prices are in United States Dollars

2. ORDER PLACEMENT

2.1 A sales quotation given in response to any request is for the potential Customer's reference only and is not legally binding on either Party. Any purchase order submitted by Customer will be deemed only a non-binding request for quotation.

2.2 Should Supplier decide to respond to a Customer's purchase order or other request from Customer, Supplier will send to Customer via e-mail or fax sales order confirmation on Supplier's form ("Sales Order Confirmation") which shall be deemed to include these T&Cs. All orders for the K2 mounting systems and related accessories (the "Product") manufactured, assembled, or otherwise distributed by Supplier are subject to these T&Cs.

3. PRICES AND TERMS OF PAYMENT

3.1 The price per Product (the "Purchase Price") shall be as set forth in the Sales Order Confirmation to be faxed or e-mailed to Customer. Such Sales Order Confirmation will be prepared by Supplier after receipt from Customer of a purchase order confirming the quantity and delivery requirements of Customer. If the Sales order Confirmation specifies an advance payment, then Supplier shall have no responsibility to commence efforts to fulfill Customer's order until the payment has been received. If status payments are specified, then if such status payment is not received when due, the Supplier reserves the right at any time thereafter to cease further efforts to supply the Products ordered by Customer without liability to Customer. If Status payments remain unpaid for more than sixty (60) days, Supplier reserves the right to cancel the order, scrap, recycle or reuse the work performed to date in its sole discretion, and retain the payments previously made to offset its damages for Customer's breach, without prejudice to any other remedy Supplier may have pursuant to applicable law.

3.2 Upon receipt of the payment for the entire amount of the Purchase Price, Supplier will promptly ship the Product to Customer in the manner confirmed in the Sales Order Confirmation.

3.3 Payments are due at the time specified in the Sales Order Confirmation, or if not, so specified upon shipment, or net 30 days thereafter if credit has been approved for the Customer. Finance charges equal to the lesser of 1.5% per month (18% per annum) or the maximum rate permitted by applicable law may be assessed on payments received after delivery has been made by Supplier to the shipper, from such delivery date to the date payment is received by Supplier. No unauthorized deductions from invoices are permitted.

3.4 Customer will also be required to pay all sales or use taxes unless satisfactory evidence of re-seller status or tax-exempt form is provided to Supplier.

3.5 The Purchase Price shall be paid in cash, either by wire transfer, check or other mutually agreed method.

4. SHIPMENT TERMS AND LIMITATIONS

4.1 Shipping terms are Ex Works (Incoterms 2010), Supplier's facility, Pre-paid and Added, unless otherwise provided in the Customer's purchase order and confirmed in Supplier's a Sales Order Confirmation.

4.2 Any estimate by Supplier to Customer for the cost and time of delivery of the Product is only an estimate, and time of delivery shall be automatically extended by a reasonable period of time due to unforeseen causes beyond the reasonable control of Supplier. In particular, Supplier shall have no responsibility for delays caused by events of force majeure, labor strikes, loss of utility service, unavailability of components due to actions of third parties, acts of terrorism, and acts of governmental authorities.

5. MISCELLANEOUS TERMS

5.1 Change orders can be made prior to shipment and Supplier will make every effort to promptly fill the order. Any changes must be submitted in writing prior to order shipment. Any changes to an order requested by Customer once the Sales Order Confirmation has been faxed or e-mailed will be at Supplier's sole discretion, and Supplier reserves the right to assess change order fees.

5.2 Special orders or custom products are not cancellable once material has been procured for the order.

5.3 These T&Cs and the Sales Order Confirmation constitute the entire contract of purchase and sale between Customer and Supplier for the Products so ordered. No other previous or contemporaneous communication between Customer and Supplier for such Products shall have any legal effect on either party. To the extent that Customer inserts any terms into the Sales Order Confirmation after it has been submitted by Supplier to Customer, or if any terms in Customer's purchase order differ from these T&Cs, such terms shall be of no force or effect, unless subsequently expressly approved by Supplier in writing.

5.4 Export of the Products may be subject to export control by the United States government. It is Customer's sole responsibility to obtain any licenses or approvals which may be required under the applicable laws of the United States, including, without limitation, the Export Administration Act and the regulations promulgated thereunder. Customer shall defend, indemnify and hold Supplier harmless for any violation of export controls.

5.5 No delay or forbearance by Supplier in enforcing any provision of these T&Cs or the terms of the Supplier form of purchase order shall preclude Supplier from enforcing such terms in the future.

6. WARRANTY AND LIMITATION OF LIABILITY

6.1 The warranty terms are set forth in the accompanying document titled Product Limited Warranty Terms and Conditions.

7. CHOICE OF LAW AND DISPUTE RESOLUTION

7.1 Governing Law. These T&Cs and the Sales Order Confirmation are the entirety of the transaction documents and shall be construed and enforced in accordance with the laws of the State of California, except with respect to conflicts of laws principles. The application of the United Nations Convention on Contracts for the International Sale of Goods is hereby excluded.

7.2 Dispute Resolution.

7.2.1 Arbitration. Any disputes that cannot be resolved by the Parties themselves shall be resolved by binding arbitration in San Diego, California conducted in accordance with the commercial arbitration rules of the American Arbitration Association pursuant to the Federal Arbitration Act, 9 U.S.C. § 1, et seq. The arbitrator(s) in such arbitration shall be authorized and instructed to award to the prevailing Party, as part of its award, an amount equal to the prevailing Party's costs of arbitration, including, without limitation, reasonable attorneys' fees. The Parties agree to informally negotiate any dispute for not less than a thirty (30) day period. Thereafter, prior to either Party filing for arbitration, such Party shall provide the other Party with not less than fifteen (15) days prior written notice of its intent to file for arbitration, in order to provide a final period in which to negotiate prior to the filing of an arbitration demand. The arbitrator shall be instructed to enforce the rights and obligations of the Parties pursuant to the terms of these T&Cs and the Purchaser's form of purchase order, and shall not be authorized to render any finding contrary to such terms, or to the laws of the State of California or of the United States.

7.2.2 Enforcement of Arbitral Award - Consent to Jurisdiction and venue. Each of the Parties hereby irrevocably consents and agrees that any legal action or proceedings brought to enforce any arbitral award granted pursuant to this Agreement may be brought in state and federal courts located in San Diego, California, or by Supplier in any jurisdiction where Customer has a place of business or assets.

8. NOTICES

8.1 Any notice required by this Agreement or given in connection with it shall be in writing and shall be given to the appropriate Party by personal delivery or by certified mail, postage prepaid, or recognized overnight delivery services.

Contact

K2 Systems, LLC
2835 La Mirada Drive, Suite A
Vista, CA 92081
USA
+1 760-301-5300
info-us@k2-systems.com
www.k2-systems.com

K2 Systems S de RL de CV
Calle Coral #2628 interior 1
Col. Residencial Victoria, C.P. 44560,
Guadalajara, Jal.
México
+1 760-301-5300
info-mx@k2-systems.com
www.k2-systems.com

K2 Systems GmbH
Industriestraße 18
71272 Renningen
Germany
+49 (0) 7159 - 42059 - 0
info@k2-systems.com
www.k2-systems.com

K2 Systems s.r.l.
Via Garofalo n.2
40124 Bologna
Italy
+39 338 5281660
info@k2-systems.it
www.k2-systems.com

K2 Solar Mounting Solutions Ltd.
Unit 46 Easter Park
Benyon Road
Aldermaston, Berkshire
RG 7 2PQ
United Kingdom
+44 (0) 1189 701280
info@k2-systems.uk.com
www.k2-systems.com

K2 Systems SARL
19 Avenue du Pré de Challes
Parc des Glaisins
74940 Annecy le Vieux
France
+33 (0) 4 50 51 22 53
info@k2-systems.fr
www.k2-systems.com

K2 Solar Mounting Solutions (Pty) Ltd
Foyer 3 · 1st Floor, Colosseum Building ·
Century Way
Century City · Cape Town
South Africa
+27 83 257 6399
mail@k2-systems.co.za
www.k2-systems.com

K2 Systems Sales Office Brazil
I-Tower · Alameda Xingu, 350
CEP 06455-911 · Alphaville Barueri
São Paulo
Brazil
+55 (11) 98548 3286
info@k2-systems.com.br
www.k2-systems.com

K2 Systems Australia Pty Limited
Brisbane City
Australia
+61 1300 527978
info@k2-systems.com.au
www.k2-systems.com



- SYSTEM
- PITCHED ROOF
 - CrossRail
 - Shared Rail
 - Tilt Up
 - MiniRail
- FLAT ROOF
 - D-Dome R²
 - Tilt Up
- GROUND MOUNTED
 - Ground Mount
- ROOF ATTACHMENTS
- ACCESSORIES
- TERMS AND CONDITIONS
- CONTACT